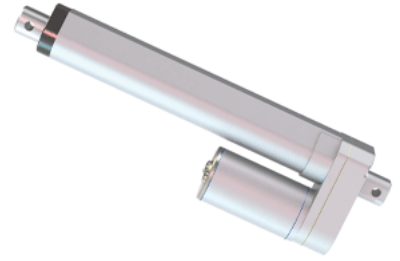
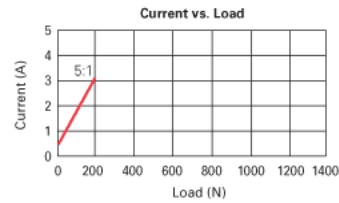
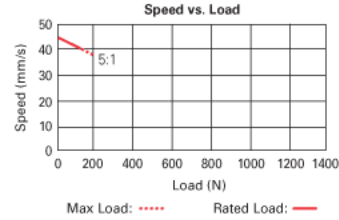
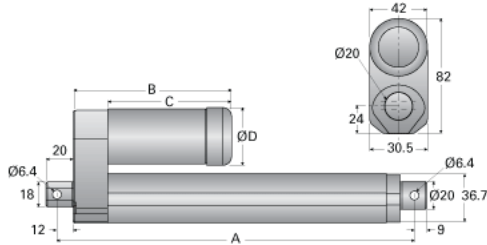


## VMD3-12-20

Call 800-321-7800 or visit us online at [www.nookindustries.com](http://www.nookindustries.com) to configure and order your VMD3-12-20 today!



|                                | Retracted Length A ( $\pm 3.8$ mm) |     |     |     |     |     | B   | C  | D  |
|--------------------------------|------------------------------------|-----|-----|-----|-----|-----|-----|----|----|
| Travel (in)                    | 2                                  | 4   | 6   | 8   | 10  | 12  | —   | —  | —  |
| Travel ( $\pm 5$ mm)           | 50                                 | 100 | 150 | 200 | 250 | 300 | —   | —  | —  |
| <b>Standard</b>                | 158                                | 209 | 260 | 311 | 362 | 413 | 95  | 72 | 40 |
| <b>With Potentiometer</b>      | 195                                | 246 | 297 | 348 | 399 | 450 | 132 | 72 | 40 |
| <b>With Hall Effect Sensor</b> | 158                                | 209 | 260 | 311 | 362 | 413 | 113 | 90 | 42 |



### Product Info

Screw Type

Acme Screw

### Details

Voltage [VDC]

12

Gear Ratio

20:1

Speed [mm/s]

12

Load Capacity Rated Load [N]

420

Load Capacity Maximum Load [N]

500

Amps

3

### Performance Specifications

Duty Cycle [% of 5 Minutes]

25

Protection Class

IP65