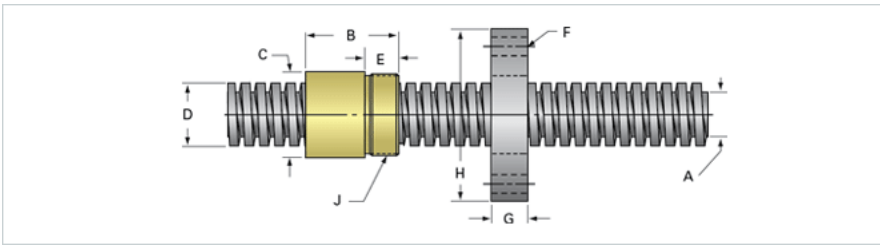
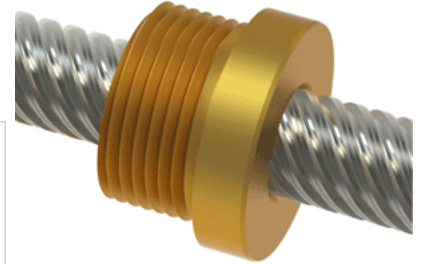


PowerAC 1/2"-1 RS w/Bronze Nut

Call 800-321-7800 or visit us online at www.nookindustries.com to configure and order your PowerAC 1/2"-1 RS w/Bronze Nut today!



Rolled Inch Acme Screw

Product Info

Screw Code	051-RS
Thread Direction	RH
Screw Material	300 Series Stainless

Details

Lead [in]	1.000
Starts	8
Pitch [in]	0.125
Turns Per Inch	1
Threads per Inch	8
Thread Code	051
Form	Stub
End Code for Types 1,2,3,5 [* Journals may show tracings of the thread]	9
End Code for Type 4 [* Journals may show tracings of the thread]	6

Dimensions

A - Root Diameter Minimum [in]	0.392
D - Nominal Rod Diameter [in]	0.500

Part Numbers

3 ft. Part Number	91051
6 ft. Part Number	92051
12 ft. Part Number	93051
20 ft. Part Number	

Performance Specifications

Lead Accuracy +/- [in/in]	0.0003
---------------------------	--------

Weight

Screw Weight [lb./ft.]	0.53
------------------------	------

Inch Acme Nut with Optional Flange

Product Info

Part Number	20051
Thread Direction	RH
Type	Bronze

Details

Lead [in]	1.000
Starts	8
Pitch [in]	0.125
Turns Per Inch	1
Lash (Maximum Axial) [in]	0.007
Nominal Rod Diameter [in]	0.500
Threads per Inch	8
Thread Code	051
Form	Stub

Dimensions

B [in]	0.75
C [in]	1.12
E [in]	0.50
F (n) Dia. [in]	(4) .266
F BCD [in]	2.090
G [in]	0.53
H [in]	2.60
J [in]	.937-16

Forces and Torques

Torque to Raise 1 lb. [in-lb]	0.210
-------------------------------	-------

Flange Part Numbers

Flange No-Lash Part Number	
Flange Part Number	FLG7570

Weight

Flange Weight [lb]	0.77
Nut Weight [lb]	0.03

Performance Specifications

Efficiency [%]	77
Lead Accuracy +/- [in/in]	0.0003
Dynamic Load Capacity [lb]	1250
Static Load Capacity [lb]	4000