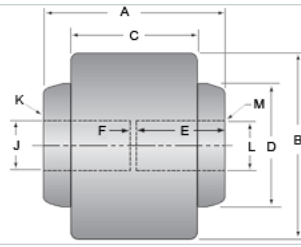


## Full Flex 1 3/8 x 1 1/4

Call 800-321-7800 or visit us online at [www.nookindustries.com](http://www.nookindustries.com) to configure and order your Full Flex 1 3/8 x 1 1/4 today!



### Product Info

Product Code C-1810-02

### Dimension

A [in]	3.75
B [in]	3.75
C [in]	2.53
D [in]	2.38
E [in]	1.82
F [in]	0.13
J [in]	1.3745/1.3740
K - Keyway [in]	5/16 x 5/32
L [in]	1.2495/1.2490
M - Keyway [in]	1/4 x 1/8

### Performance Specifications

Maximum Torque Rating [in-lb] 7500

### Weight

Weight [lb] 8.00