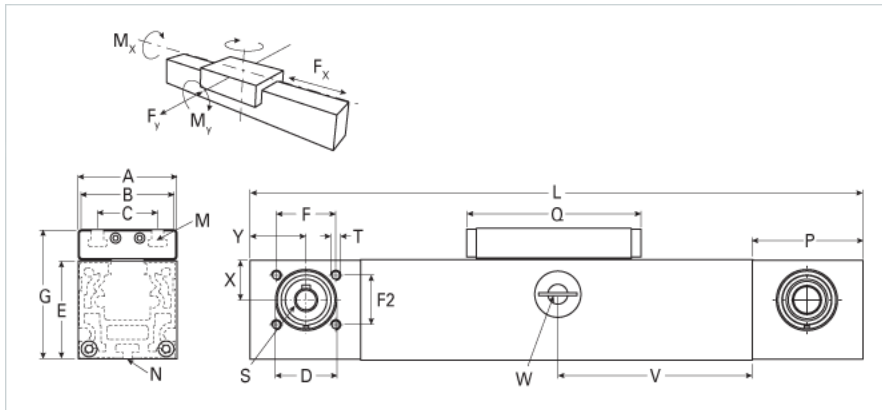


## QSIZE 100

Call 800-321-7800 or visit us online at [www.nookindustries.com](http://www.nookindustries.com) to configure and order your QSIZE 100 today!



<b>Details</b>	
Size	100
Belt	8M50
mm/Rev	224
Number of Teeth	28
Pully Diameter [mm]	71.3
<b>Dimensions</b>	
Basic Length L [mm]	504
A [mm]	101
B [mm]	100
C [mm]	66
D [mm]	62
E [mm]	101
F [mm]	62
F2 [mm]	58
G [mm]	130
M	M10
N	M10
P [mm]	107
Q [mm]	268
T	M10
X [mm]	40.0
Y [mm]	54
Shaft Diameter and Length [mm]	22 x 45
Key	6x6x40
<b>Speed</b>	
Speed Maximum [m/s]	5
<b>Forces and Torques</b>	
No-load torque [Nm]	1.8
Fx [N] 10000 km	3800
Fy [N] 10000 km	2900
Fz [N] 10000 km	7270
Mx [Nm] 10000 km	101
My [Nm] 10000 km	311
Mz [Nm] 10000 km	292
Fx [N] 5000 km	4000
Fy [N] 5000 km	4080
Fz [N] 5000 km	10300
Mx [Nm] 5000 km	142
My [Nm] 5000 km	439
Mz [Nm] 5000 km	412
Tensile force 0.2 sec [N]	4300
Tensile force permanent [N]	4000
<b>Geometrical moments of inertia of aluminum profile</b>	
Elastic modulus [N/mm <sup>2</sup> ]	70000
Ix [mm <sup>4</sup> ]	4300000
Iy [mm <sup>4</sup> ]	4880000
<b>Weight</b>	
Additional Weight per 100 mm [kg]	1.77
Basic Weight [kg]	15.9