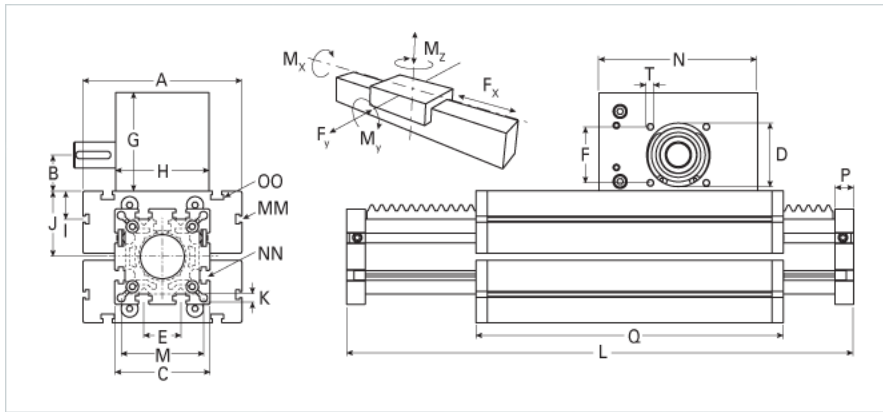
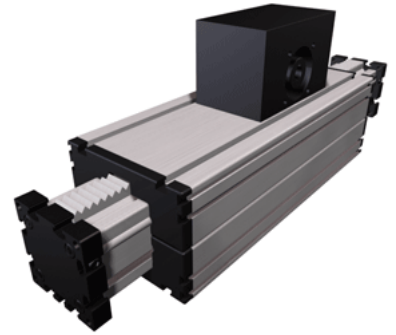


## ELZA 100 WAC Extended Carriage

Call 800-321-7800 or visit us online at [www.nookindustries.com](http://www.nookindustries.com) to configure and order your ELZA 100 WAC Extended Carriage today!



|   |         |
|---|---------|
| <b>Details</b>  |         |
| Size  | 100     |
| <b>Dimensions</b>   |         |
| Basic Length L [mm]                                       | 581     |
| A [mm]  | 230     |
| B [mm]  | 55.3    |
| C [mm]  | 130     |
| D [mm]  | 90      |
| E [mm]  | 50      |
| F [mm]  | 80      |
| G [mm]  | 155     |
| H [mm]  | 120     |
| I [mm]  | 29      |
| J [mm]  | 89      |
| K [mm]  | 10.5    |
| M [mm]  | 112     |
| MM  | M10     |
| N [mm]  | 240     |
| NN  | M10     |
| OO  | M10     |
| P [mm]  | 30      |
| Q [mm]  | 521     |
| T   | M10     |
| X [mm]  | -       |
| <b>Speed</b>  |         |
| Speed Maximum [m/s]                                       | 3       |
| <b>Forces and Torques</b>                                 |         |
| F <sub>x</sub> dynamic [N]                                | 2500    |
| F <sub>y</sub> dynamic [N]                                | 6500    |
| F <sub>z</sub> dynamic [N]                                | 2200    |
| M <sub>x</sub> dynamic [Nm]                               | 230     |
| M <sub>y</sub> dynamic [Nm]                               | 270     |
| M <sub>z</sub> dynamic [Nm]                               | 500     |
| F <sub>x</sub> static [N]                                 | 2900    |
| F <sub>y</sub> static [N]                                 | 8000    |
| F <sub>z</sub> static [N]                                 | 3600    |
| M <sub>x</sub> static [Nm]                                | 300     |
| M <sub>y</sub> static [Nm]                                | 400     |
| M <sub>z</sub> static [Nm]                                | 750     |
| <b>Geometrical moments of inertia of aluminum profile</b> |         |
| Elastic modulus [N/mm <sup>2</sup> ]                      | 70000   |
| I <sub>x</sub> [mm <sup>4</sup> ]                         | 4440000 |
| I <sub>y</sub> [mm <sup>4</sup> ]                         | 4480000 |
| <b>Weight</b>   |         |
| Additional Weight per 100 mm [kg]                         | 1.75    |
| Basic Weight [kg]   | 24.0    |