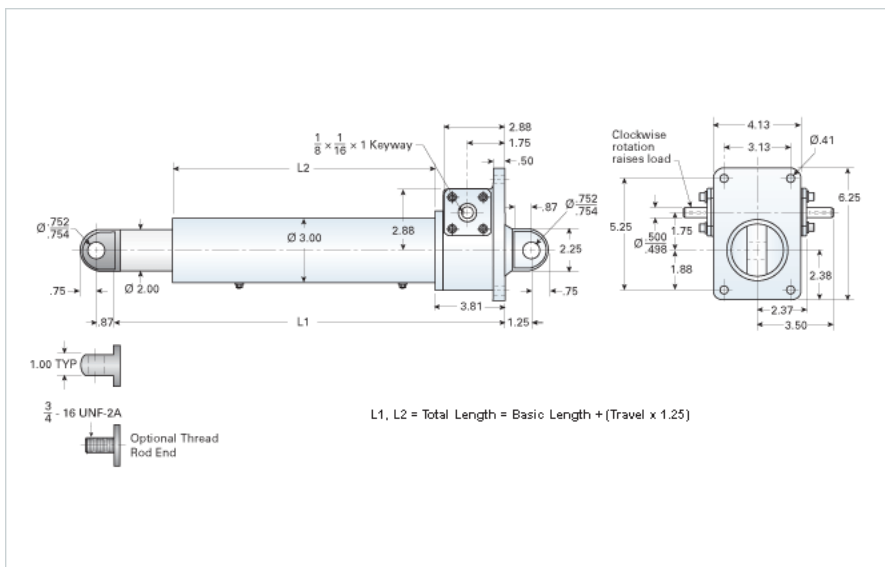


DD-2512-HL

Call 800-321-7800 or visit us online at www.nookindustries.com to configure and order your DD-2512-HL today!



Details

Gear Ratio	12:1
Max Capacity [lb]	5000
Input Turns Per Inch Of Travel	12
Torque To Raise 1 lb. [in-lb]	0.0244
Ball Screw	1000-1000 SRT RA
Screw Lead [in]	1.000
Root Diameter [in]	0.820
Max HP [hp]	1.5

Weight

Basic Weight [lb]	33
Per Inch of Travel [lb]	1.05

Tube Dimensions

L1 Basic Length [in]	12.44
L2 Basic Length [in]	7.13

NEMA 42 Dimensions

L3 [in]	-
E [in]	-
F [in]	-

NEMA 48 Dimensions

L3 [in]	-
E [in]	-
F [in]	-

NEMA 56C Dimensions

L3 [in]	6.25
E [in]	6.62
F [in]	3.50

NEMA 182TC Dimensions

L3 [in]	-
E [in]	-

NEMA 182TC/18TCc Dimensions

F [in]	-
--------	---

NEMA 184TC Dimensions

L3 [in]	-
E [in]	-
F [in]	-

NEMA 213TC Dimensions

L3 [in]	-
E [in]	-
F [in]	-