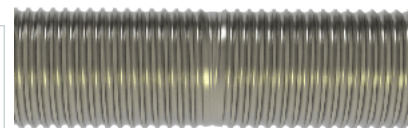
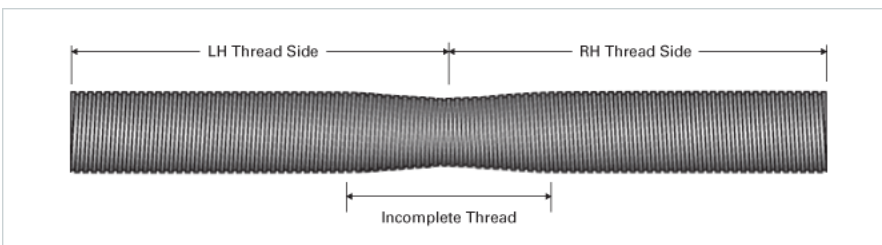


## PowerTrac SGT 2000 - 0200 RH/LH

Call 800-321-7800 or visit us online at [www.nookindustries.com](http://www.nookindustries.com) to configure and order your PowerTrac SGT 2000 - 0200 RH/LH today!



### Product Info

Screw Code	2000-0200 SGT TA
Precision	SGT
Screw Material	4150
Thread Direction	RH/LH

### Details

Ball Circle Diameter [in]	2.000
Lead [in]	0.200
Root Diameter [in]	1.849
Incomplete Overlapping Thread Length [in]	0.50
Maximum Overall Length [in]	140
Maximum Useable LH & RH Thread [in]	69.75
End Code for Types 1,2,3,5 [* Journals may show tracings of the thread]	45
End Code for Type 4 [* Journals may show tracings of the thread]	28

### Weight

Screw Weight [lb./ft.]	9.90
------------------------	------

### Performance Specifications

Lead Accuracy +/- [in./ft.]	0.001
-----------------------------	-------