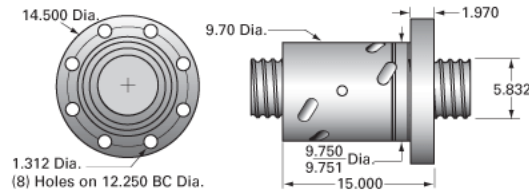


PowerTrac 6000 - 1000 SRT RA, with SBN Ball Nut, Internal

Call 800-321-7800 or visit us online at www.nookindustries.com to configure and order your PowerTrac 6000 - 1000 SRT RA, with SBN Ball Nut, Internal



Inch Ball Screw

Product Info

Screw Code	6000-1000 SRT RA
Precision	SRT
Screw Material	4150
Thread Direction	RH

Details

Ball Circle Diameter [in]	6.000
Lead [in]	1.000
Root Diameter [in]	5.232
End Code for Types 1,2,3,5 [* Journals may show tracings of the thread]	n/a
End Code for Type 4 [* Journals may show tracings of the thread]	n/a

Performance Specifications

Lead Accuracy +/- [in./ft.]	0.0080
-----------------------------	--------

Part Numbers

2 ft. Part Number	
4 ft. Part Number	
6 ft. Part Number	
8 ft. Part Number	
12 ft. Part Number	
16 ft. Part Number	
20 ft. Part Number	

Weight

Screw Weight [lb./ft.]	34.40
------------------------	-------

Inch Ball Nut, for SRT, Standard Accuracy, No Preload, SBN, Standard

Product Info

Ball Nut Number	SBN10442
Thread Direction	RH

Details

Ball Circle Diameter [in]	6.000
Lead [in]	1.000
Nominal Ball Diameter [in]	1.514
Root diameter [in]	5.232

Dimensions

A [in]	
--------	--

Forces and Torques

Torque to Raise 1 lb. [in-lb]	0.177
-------------------------------	-------

Flange Part Numbers

Flange Part Number	INTEGRAL
--------------------	----------

Wiper Part Numbers

Wiper Kit Part Number	PLASTIC
Wiper Kit Felt Part Number	

Weight

Nut Weight [lb]	225.00
-----------------	--------

Performance Specifications

Lead Accuracy +/- [in./ft.]	0.002
Maximum Adjustable Preload [lb]	
Spring Rate x 10 ⁶ [lb./in.]	
Dynamic Load [lb]	115507
Static Load [lb]	443548