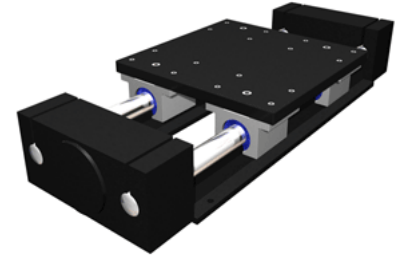
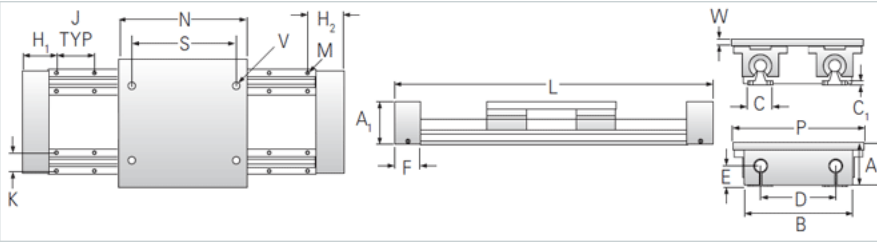


PowerTrax 251-08-LXX

Call 800-321-7800 or visit us online at www.nookindustries.com to configure and order your PowerTrax 251-08-LXX today!



Product Info

Nominal Shaft Diameter [in] 0.50

Dimensions

| | |
|-----------------------------------|--------|
| A +/-0.003 [in] | 2.187 |
| A1 [in] | 2.13 |
| B [in] | 4.25 |
| C [in] | 1.50 |
| C1 [in] | 0.19 |
| D [in] | 3.25 |
| E [in] | 1.13 |
| F [in] | 1.5 |
| H [in] | 2.00 |
| J +/-0.010 [in] | 4.000 |
| K +/-0.010 [in] | 1.000 |
| M - Bolt | #6 |
| M - Hole [in] | 0.17 |
| N [in] | 5.50 |
| P [in] | 5.50 |
| S [in] | 4.50 |
| U [in] | 3.25 |
| V | 1/4-20 |
| W [in] | 0.38 |
| Minimum L Dimension TRAVEL + [in] | 8.5 |

Performance specifications

Load Maximum System [lbf] 760