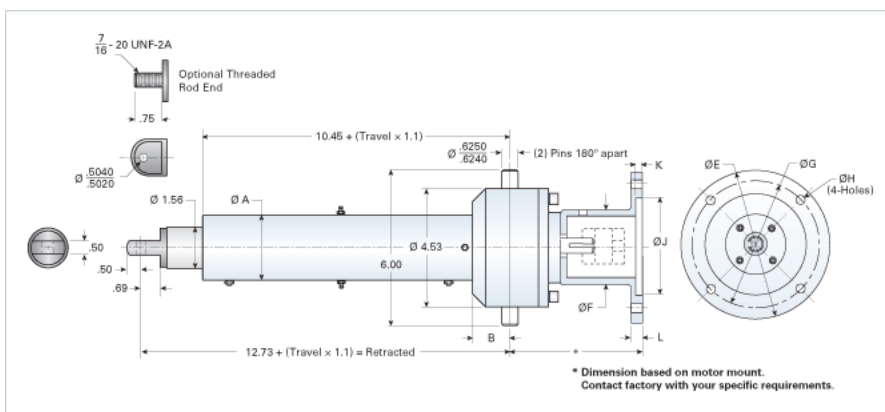
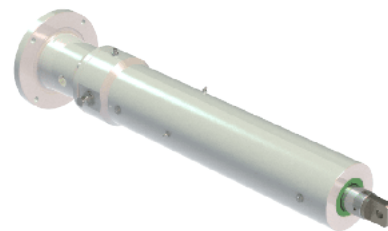


## ActionJac ILAK-10 HL

Call 800-321-7800 or visit us online at [www.nookindustries.com](http://www.nookindustries.com) to configure and order your ActionJac ILAK-10 HL today!



### Performance Specifications

Maximum Travel Rate [in/min]	2000
Dynamic Capacity [lb]	1200
Maximum Input Torque [in-lb]	105

### Dimensions

A	4
B	1.25
C	
D	

### Details

Ball Screw	0750-0200 SRT
Input Turns Per Inch Of Travel	2
Torque Per Lb. [in-lb]	0.088
Screw Lead [in]	0.500
Root Diameter [in]	0.602
Max Capacity [lb]	1200
Max HP [hp]	2
Gear Ratio	1:1

### Weight

Basic Weight [lb]	32
Per Inch of Travel [lb]	0.98