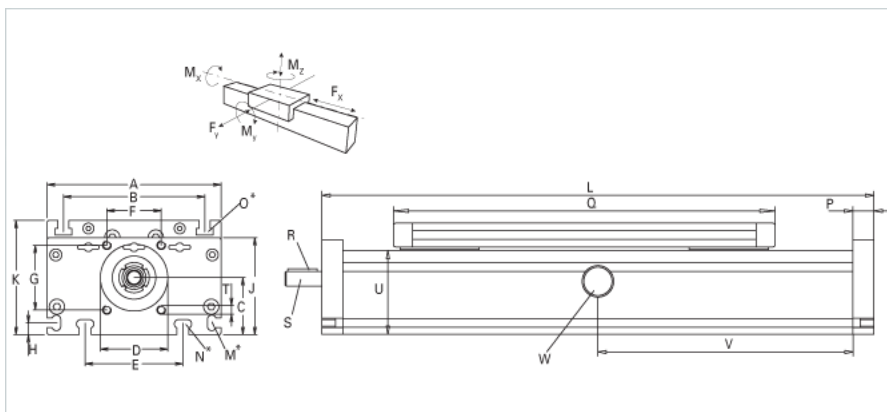
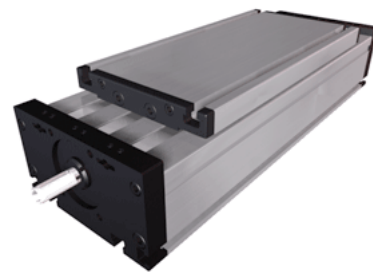


DSK 200 Extended Carriage

Call 800-321-7800 or visit us online at www.nookindustries.com to configure and order your DSK 200 Extended Carriage today!



| Details | |
|--|------------------------|
| Size | 200 |
| Screw Options | 32x5/32x10/32x20/32x32 |
| Screw Type | Ball Screw |
| Dimensions | |
| Basic Length L [mm] | 360 |
| A [mm] | 200 |
| B [mm] | 160 |
| C [mm] | 66 |
| D [mm] | 68 |
| E [mm] | 140 |
| F [mm] | 60 |
| G [mm] | 60 |
| H [mm] | 15 |
| J [mm] | 110 |
| K [mm] | 129 |
| M | M8 |
| N | M10 |
| O | M10 |
| P [mm] | 20 |
| Q [mm] | 310 |
| Shaft R Key [mm] | 6X6X40 |
| Shaft S Diameter x Length [mm] | 22 h6x45 |
| T | M8 |
| U [mm] | 100 |
| Forces and Torques | |
| Fx [N] 10000 km | 8000 |
| Fy [N] 10000 km | 11080 |
| Fz [N] 10000 km | 14600 |
| Mx [Nm] 10000 km | 915 |
| My [Nm] 10000 km | 980 |
| Mz [Nm] 10000 km | 960 |
| Fx [N] 5000 km | 10000 |
| Fy [N] 5000 km | 15600 |
| Fz [N] 5000 km | 20600 |
| Mx [Nm] 5000 km | 1285 |
| My [Nm] 5000 km | 1375 |
| Mz [Nm] 5000 km | 1345 |
| No-load torque [Nm] | 1.5 |
| Geometrical moments of inertia of aluminum profile | |
| Elastic modulus [N/mm ²] | 70000 |
| Ix [mm ⁴] | 4810000 |
| Iy [mm ⁴] | 26000000 |
| Weight | |
| Weight Per 100 mm [kg] | 3.5 |
| Basic Weight [kg] | 19.4 |