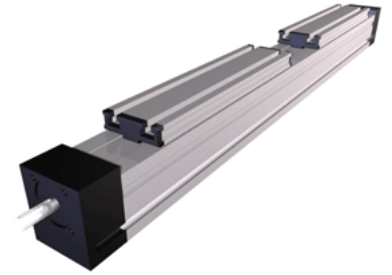
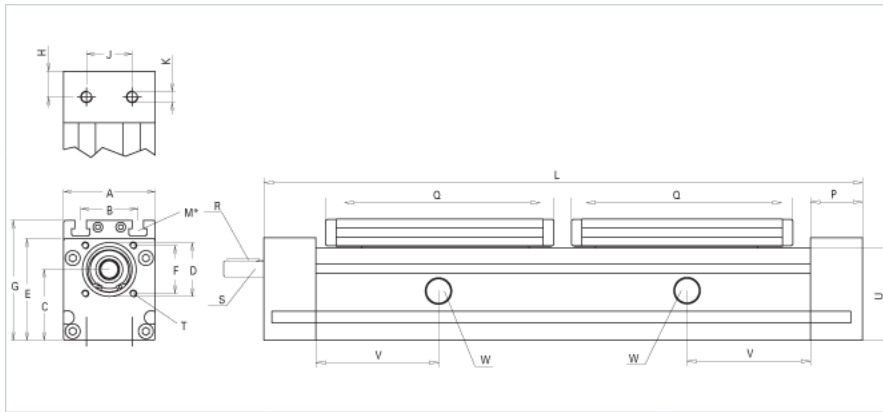


## QSK 60 Dual Carriage Extended Carriage

Call 800-321-7800 or visit us online at [www.nookindustries.com](http://www.nookindustries.com) to configure and order your QSK 60 Dual Carriage Extended Carriage today!



### Details

Size

60

Screw Options

16x5/16x10/16x16

Screw Type

Ball Screw

### Dimensions

Basic Length L with Divided Screw [mm]

630

Basic Length L with Twin Lead Screw [mm]

590

A [mm]

60

B [mm]

36

C [mm]

45

D [mm]

37

E [mm]

67

F [mm]

32

G [mm]

79

H [mm]

19

J [mm]

18

K

M6

M

M6

P [mm]

38

Q [mm]

255

Shaft R Key [mm]

3x3x25

Shaft S Diameter x Length [mm]

10h6x27

T

M5

U [mm]

60

### Forces and Torques

F<sub>x</sub> [N] 10000 km

800

F<sub>y</sub> [N] 10000 km

1010

F<sub>z</sub> [N] 10000 km

2510

M<sub>x</sub> [Nm] 10000 km

23

M<sub>y</sub> [Nm] 10000 km

143

M<sub>z</sub> [Nm] 10000 km

125

F<sub>x</sub> [N] 5000 km

900

F<sub>y</sub> [N] 5000 km

1415

F<sub>z</sub> [N] 5000 km

3525

M<sub>x</sub> [Nm] 5000 km

33

M<sub>y</sub> [Nm] 5000 km

190

M<sub>z</sub> [Nm] 5000 km

176

### Geometrical moments of inertia of aluminum profile

Elastic modulus [N/mm<sup>2</sup>]

70000

I<sub>x</sub> [mm<sup>4</sup>]

430000

I<sub>y</sub> [mm<sup>4</sup>]

480000

### Weight

Additional Weight per 100 mm [kg]

0.5

Basic Weight [kg] [.0}

5.4