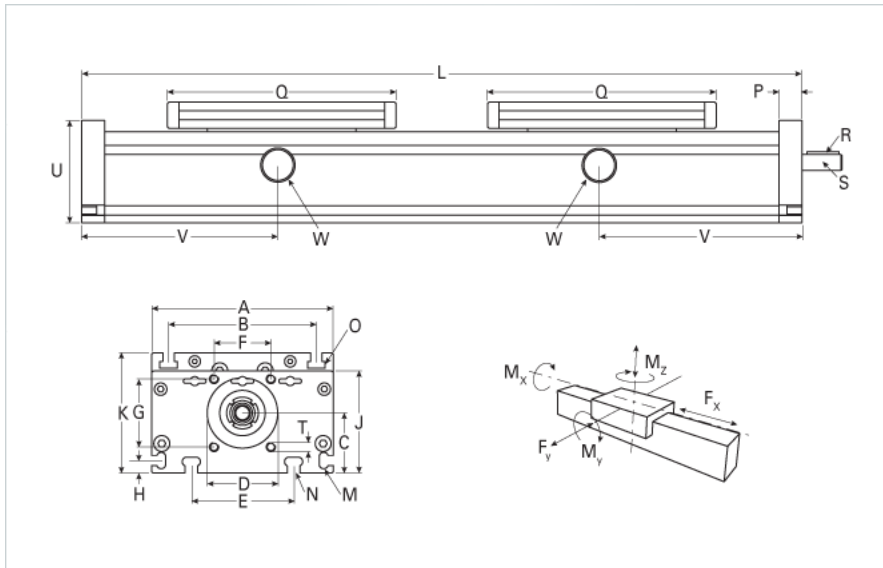
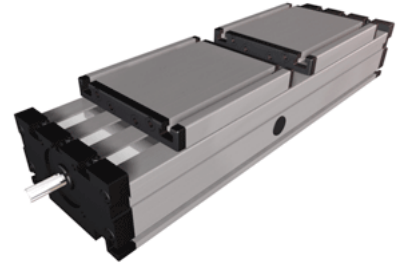


DLK 160 Dual Carriage

Call 800-321-7800 or visit us online at www.nookindustries.com to configure and order your DLK 160 Dual Carriage today!



Details	
Size	160
Screw Options	25x5/20x20/25x10/25x25
Screw Type	Ball Screw
Dimensions	
Basic Length L [mm]	470
A [mm]	160
B [mm]	130
C [mm]	53
D [mm]	62
E [mm]	90
F [mm]	50
G [mm]	60
H [mm]	11
J [mm]	90
K [mm]	106
M	M6
N	M8
O	M8
P [mm]	20
Q [mm]	200
Shaft R Key [mm]	5x5x28
Shaft S Diameter x Length [mm]	14 h6x35
T	M8
U [mm]	80
Forces and Torques	
No Load Torque-Dynamic	0.9
F_x dynamic [N]	4000
F_y dynamic [N]	2000
F_z dynamic [N]	2800
M_x dynamic [Nm]	320
M_y dynamic [Nm]	300
M_z dynamic [Nm]	150
F_x static [N]	5000
F_y static [N]	3000
F_z static [N]	3500
M_x static [Nm]	400
M_y static [Nm]	360
M_z static [Nm]	180
Geometrical moments of inertia of aluminum profile	
Elastic modulus [N/mm ²]	70000
I_x [mm ⁴]	2220000
I_y [mm ⁴]	12200000
Weight	
Additional Weight per 100 mm [kg]	1.96
Basic Weight [kg]	12.0