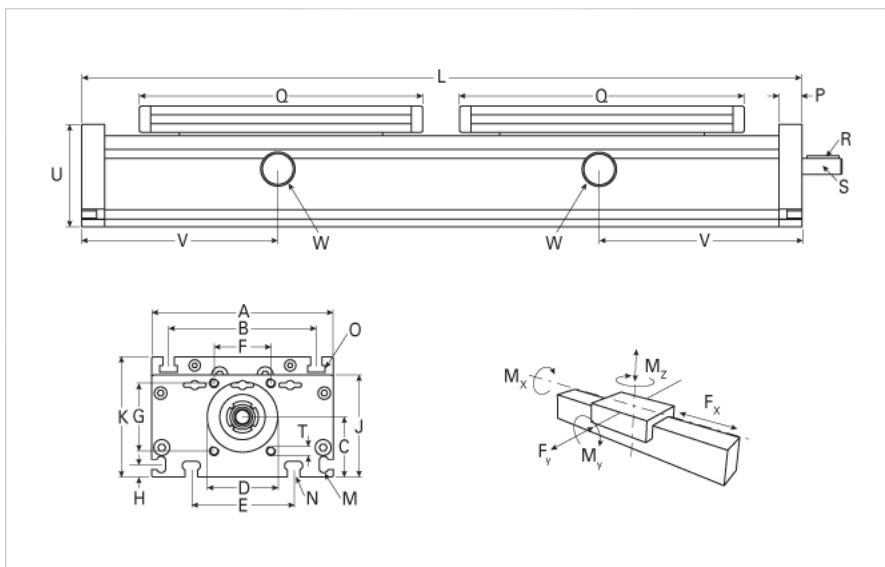


DLT 120 Dual Carriage Extended Carriage 6 Split Rollers

Call 800-321-7800 or visit us online at www.nookindustries.com to configure and order your DLT 120 Dual Carriage Extended Carriage 6 Split Rollers



Details	
Size	120
Screw Options	18x4/18x8
Screw Type	Trapexoidal
Dimensions	
Basic Length L [mm]	530
A [mm]	120
B [mm]	96
C [mm]	39
D [mm]	47
E [mm]	78
F [mm]	42
G [mm]	42
H [mm]	10
J [mm]	68
K [mm]	79
M	M5
N	M6
O	M6
P [mm]	15
Q [mm]	236
Shaft R Key [mm]	3x3x25
Shaft S Diameter x Length [mm]	10 h6x27
T	M6
U [mm]	60
Forces and Torques	
No Load Torque-Dynamic	0.9
F _x dynamic [N]	800
F _y dynamic [N]	900
F _z dynamic [N]	1000
M _x dynamic [Nm]	125
M _y dynamic [Nm]	120
M _z dynamic [Nm]	90
F _x static [N]	900
F _y static [N]	1100
F _z static [N]	1250
M _x static [Nm]	150
M _y static [Nm]	140
M _z static [Nm]	100
Geometrical moments of inertia of aluminum profile	
Elastic modulus [N/mm ²]	70000
I _x [mm ⁴]	660000
I _y [mm ⁴]	3860000
Weight	
Additional Weight per 100 mm [kg]	0.92
Basic Weight [kg]	5.1