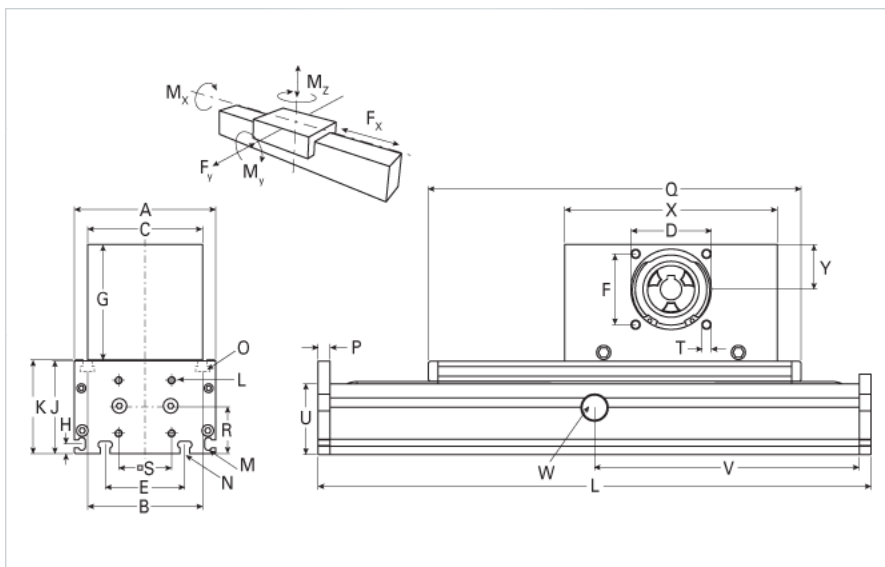
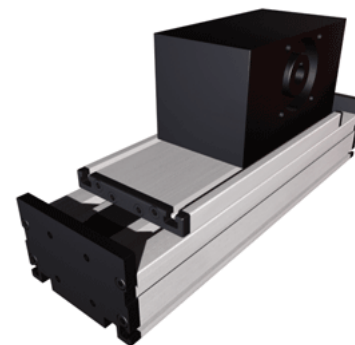


## DLSZ 120 Extended Carriage 6 Split Rollers

Call 800-321-7800 or visit us online at [www.nookindustries.com](http://www.nookindustries.com) to configure and order your DLSZ 120 Extended Carriage 6 Split Rollers today!



<b>Details</b>	
Size	120
Belt	8M30
mm/Rev	192
Number of Teeth	24
Pully Diameter [mm]	61.1
<b>Dimensions</b>	
Basic Length L [mm]	310
A [mm]	120
B [mm]	96
C [mm]	100
D [mm]	68
E [mm]	78
F [mm]	60
G [mm]	100
H [mm]	10
J [mm]	78
K [mm]	79
M	M5
N	M6
O	M6
P [mm]	10
Q [mm]	280
R [mm]	39
S [mm]	42
T	M8
U [mm]	60
X [mm]	180
Y [mm]	39
Shaft Diameter and Length [mm]	18 x 45
Key	6x6x40
<b>Speed</b>	
Speed Maximum [m/s]	4
<b>Forces and Torques</b>	
No-load torque [Nm]	1.1
Tensile force 0.2 sec [N]	2090
Tensile force permanent [N]	1900
Fx dynamic [N]	1800
Fy dynamic [N]	900
Fz dynamic [N]	1000
Mx dynamic [Nm]	125
My dynamic [Nm]	120
Mz dynamic [Nm]	90
Fx static [N]	1900
Fy static [N]	1100
Fz static [N]	1250
Mx static [Nm]	150

My static [Nm]	140
Mz static [Nm]	100
<b>Geometrical moments of inertia of aluminum profile</b>	
Elastic modulus [N/mm <sup>2</sup> ]	70000
Ix [mm <sup>4</sup> ]	660000
Iy [mm <sup>4</sup> ]	3860000
<b>Weight</b>	
Additional Weight per 100 mm [kg] [.00}	1.2
Basic Weight [kg]	12.0