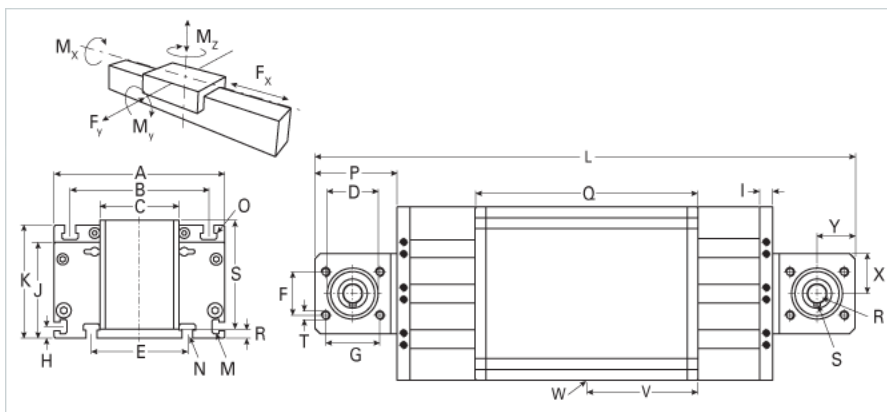
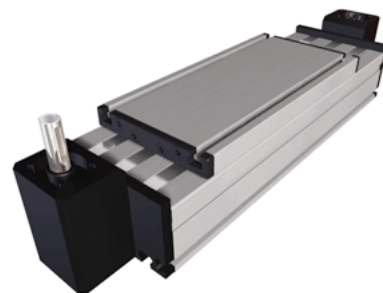


## DLVZ 120 Extended Carriage 6 Split Rollers

Call 800-321-7800 or visit us online at [www.nookindustries.com](http://www.nookindustries.com) to configure and order your DLVZ 120 Extended Carriage 6 Split Rollers today!



| <b>Details</b>  |         |
|---|---------|
| Size  | 120     |
| Belt  | 5M25    |
| mm/Rev  | 80      |
| Number of Teeth   | 16      |
| Pully Diameter [mm]                                       | 25.5    |
| <b>Dimensions</b>   |         |
| Basic Length L [mm]                                       | 380     |
| A [mm]  | 120     |
| B [mm]  | 96      |
| C [mm]  | 56      |
| D [mm]  | 37      |
| E [mm]  | 78      |
| F [mm]  | 30      |
| G [mm]  | 36      |
| H [mm]  | 10      |
| I [mm]  | 10      |
| J [mm]  | 68      |
| K [mm]  | 79      |
| M   | M5      |
| N   | M6      |
| O   | M6      |
| P [mm]  | 56      |
| Q [mm]  | 236     |
| R [mm]  | 2.5     |
| S [mm]  | 82      |
| T   | M6      |
| U [mm]  | 60      |
| X [mm]  | 28      |
| Y [mm]  | 24      |
| Z [mm]  | 14      |
| Shaft Diameter and Length [mm]                            | 14 x 35 |
| Key   | 5x5x28  |
| <b>Speed</b>  |         |
| Speed Maximum [m/s]                                       | 3       |
| <b>Forces and Torques</b>                                 |         |
| No-load torque [Nm]                                       | 1.4     |
| Tensile force 0.2 sec [N]                                 | 1000    |
| Tensile force permanent [N]                               | 900     |
| Fx dynamic [N]  | 800     |
| Fy dynamic [N]  | 900     |
| Fz dynamic [N]  | 1000    |
| Mx dynamic [Nm]   | 125     |
| My dynamic [Nm]   | 120     |
| Mz dynamic [Nm]   | 90      |
| Fx static [N]   | 894     |
| Fy static [N]   | 1100    |
| Fz static [N]   | 1250    |
| Mx static [Nm]  | 150     |
| My static [Nm]  | 140     |
| Mz static [Nm]  | 100     |
| <b>Geometrical moments of inertia of aluminum profile</b> |         |
| Elastic modulus [N/mm <sup>2</sup> ]                      | 70000   |

|                                   |         |
|-----------------------------------|---------|
| lx [mm <sup>4</sup> ]             | 660000  |
| ly [mm <sup>4</sup> ]             | 3860000 |
| <b>Weight</b>                     |         |
| Additional Weight per 100 mm [kg] | 0.82    |
| Basic Weight [kg]                 | 4.6     |