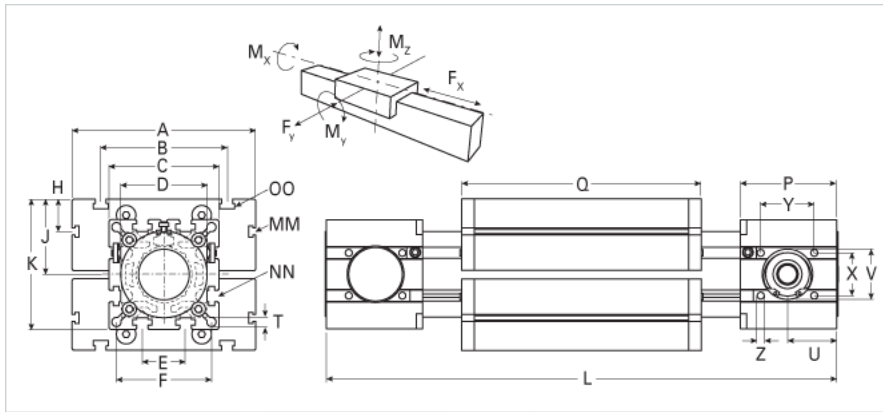
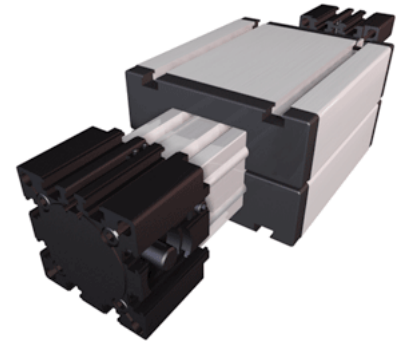


## ELHZ 100 WAC

Call 800-321-7800 or visit us online at [www.nookindustries.com](http://www.nookindustries.com) to configure and order your ELHZ 100 WAC today!



### Details

|                     |      |
|---------------------|------|
| Size                | 100  |
| Belt                | 8M48 |
| mm/Rev              | 144  |
| Number of Teeth     | 18   |
| Pully Diameter [mm] | 45.8 |

### Dimensions

|                                |         |
|--------------------------------|---------|
| Basic Length L [mm]            | 546     |
| A [mm]                         | 230     |
| B [mm]                         | 155     |
| C [mm]                         | 130     |
| D [mm]                         | 110x1   |
| E [mm]                         | 50      |
| F [mm]                         | 112     |
| G [mm]                         | -       |
| H [mm]                         | 30      |
| J [mm]                         | 89      |
| K [mm]                         | 154     |
| MM                             | M10     |
| NN                             | M10     |
| OO                             | M10     |
| P [mm]                         | 110     |
| Q [mm]                         | 316     |
| T [mm]                         | 10.5    |
| U [mm]                         | 45      |
| V [mm]                         | 68      |
| W [mm]                         | 19      |
| X [mm]                         | 50      |
| Y [mm]                         | 64      |
| Z                              | M10     |
| Shaft Diameter and Length [mm] | 22 x 45 |
| Key                            | 6x6x40  |

### Speed

|                     |   |
|---------------------|---|
| Speed Maximum [m/s] | 5 |
|---------------------|---|

### Forces and Torques

|                             |      |
|-----------------------------|------|
| No-load torque [Nm]         | 1.2  |
| Tensile force 0.2 sec [N]   | 3400 |
| Tensile force permanent [N] | 3100 |
| Fx dynamic [N]              | 2600 |
| Fy dynamic [N]              | 6500 |
| Fz dynamic [N]              | 2200 |
| Mx dynamic [Nm]             | 230  |
| My dynamic [Nm]             | 270  |
| Mz dynamic [Nm]             | 500  |
| Fx static [N]               | 3100 |
| Fy static [N]               | 8000 |
| Fz static [N]               | 3600 |
| Mx static [Nm]              | 300  |
| My static [Nm]              | 400  |
| Mz static [Nm]              | 750  |

### Geometrical moments of inertia of aluminum profile

|                                      |         |
|--------------------------------------|---------|
| Elastic modulus [N/mm <sup>2</sup> ] | 70000   |
| Ix [mm <sup>4</sup> ]                | 4440000 |

|                                   |         |
|-----------------------------------|---------|
| ly [mm <sup>4</sup> ]             | 4480000 |
| <b>Weight</b>                     |         |
| Additional Weight per 100 mm [kg] | 1.60    |
| Basic Weight [kg]                 | 24      |