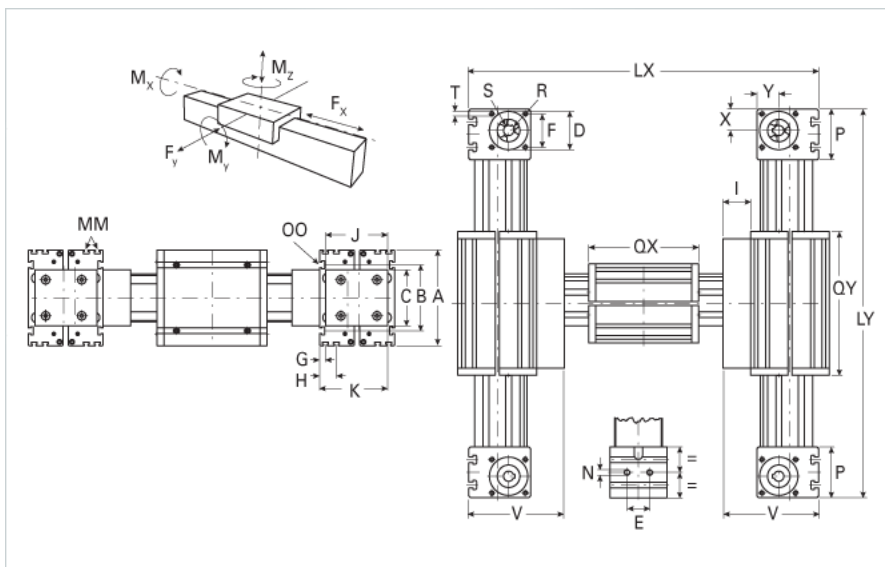
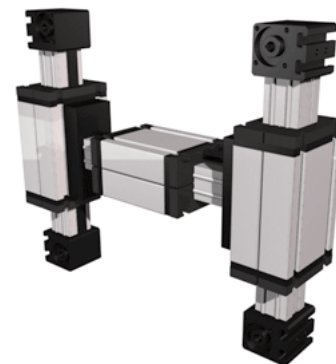


ELZU 80 X&Y-Axis WAC

Call 800-321-7800 or visit us online at www.nookindustries.com to configure and order your ELZU 80 X&Y-Axis WAC today!



Details

| | |
|---------------------|------|
| Size | 80 |
| Belt | 8M30 |
| mm/Rev | 192 |
| Number of Teeth | 24 |
| Pully Diameter [mm] | 61.1 |

Dimensions

| | |
|--------------------------------|---------|
| Basic length Lx [mm] | 551 |
| Basic length Ly [mm] | 451 |
| A [mm] | 170 |
| B [mm] | 117 |
| C [mm] | 100 |
| D [mm] | 68 |
| E [mm] | 40 |
| F [mm] | 60 |
| G [mm] | 10 |
| H [mm] | 30 |
| I [mm] | 44 |
| J [mm] | 110 |
| K [mm] | 121 |
| MM | M6 |
| N | M10 |
| OO | M10 |
| P [mm] | 90 |
| Qx [mm] | 210 |
| Qy [mm] | 260 |
| T | M8 |
| V [mm] | 165 |
| X [mm] | 39 |
| Y [mm] | 38 |
| Shaft Diameter and Length [mm] | 18 x 45 |
| Key | 6x6x40 |

Speed

| | |
|---------------------|---|
| Speed Maximum [m/s] | 6 |
|---------------------|---|

Forces and Torques

| | |
|-----------------------------|------|
| No-load torque [Nm] | 1.8 |
| Tensile force 0.2 sec [N] | 2090 |
| Tensile force permanent [N] | 1900 |
| Fx dynamic [N] | 1800 |
| Fy dynamic [N] | 2000 |
| Fz dynamic [N] | 1100 |
| Mx dynamic [Nm] | 55 |
| My dynamic [Nm] | 80 |
| Mz dynamic [Nm] | 120 |
| Fx static [N] | 1900 |
| Fy static [N] | 3000 |
| Fz static [N] | 1700 |

| | |
|---|---------|
| Mx static [Nm] | 90 |
| My static [Nm] | 110 |
| Mz static [Nm] | 150 |
| Geometrical moments of inertia of aluminum profile | |
| Elastic modulus [N/mm ²] | 70000 |
| Ix [mm ⁴] | 1899000 |
| Iy [mm ⁴] | 1997000 |
| Weight | |
| Additional Weight per 100 mm [kg] | 1.00 |
| Basic Weight [kg] | 31.0 |