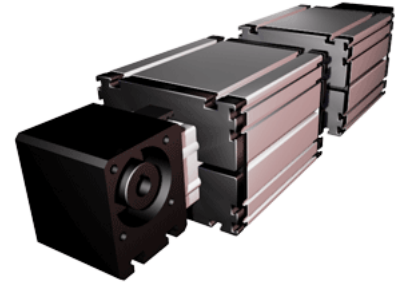
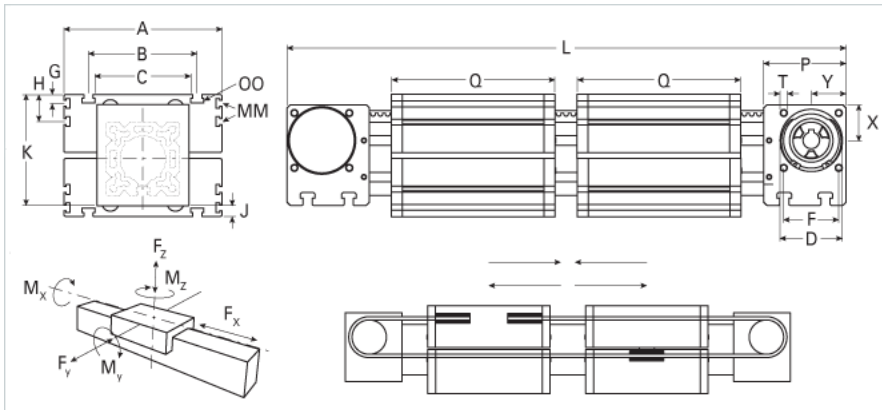


ELZ 80 WAC Dual Carriage

Call 800-321-7800 or visit us online at www.nookindustries.com to configure and order your ELZ 80 WAC Dual Carriage today!



Details

Size	80
Belt	8M30
mm/Rev	192
Number of Teeth	24

Dimensions

Basic Length L [mm]	602
A [mm]	170
B [mm]	117
C [mm]	100
D [mm]	68
F [mm]	60
G [mm]	10
H [mm]	30
J [mm]	19
K [mm]	140
MM	M6
OO	M10
P [mm]	90
Q [mm]	210
T	M8
X [mm]	39
Y [mm]	39
Shaft Diameter and Length [mm]	18 x 45
Key	6x6x40

Speed

Speed Maximum [m/s]	7
---------------------	---

Forces and Torques

No-load torque [Nm]	0.7
Tensile force 0.2 sec [N]	1000
Tensile force permanent [N]	900
F _x dynamic [N]	800
F _y dynamic [N]	2000
F _z dynamic [N]	1100
M _x dynamic [Nm]	55
M _y dynamic [Nm]	80
M _z dynamic [Nm]	120
F _x static [N]	1900
F _y static [N]	3000
F _z static [N]	1700
M _x static [Nm]	90
M _y static [Nm]	110
M _z static [Nm]	150

Geometrical moments of inertia of aluminum profile

Elastic modulus [N/mm ²]	70000
I _x [mm ⁴]	1899000
I _y [mm ⁴]	1897000

Weight

Additional Weight per 100 mm [kg]	1.00
Basic Weight [kg]	15.0

Values for Calculating Inertias

Pulley Material	Steel
Pulley Diameter [mm]	61.12

Effective Pulley Width [mm]	100.0
Belt Weight [kg/m]	0.256
Standard Carriage Weight [kg]	5.29
No-load torque [Nm]	0.9
Friction Coefficient	0.01