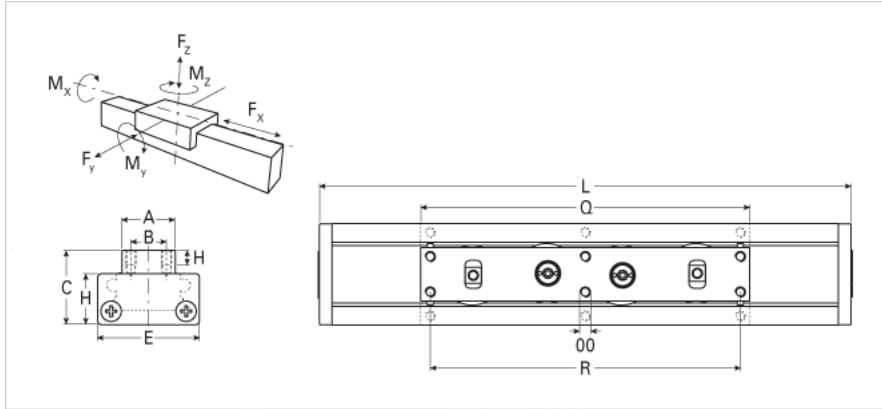
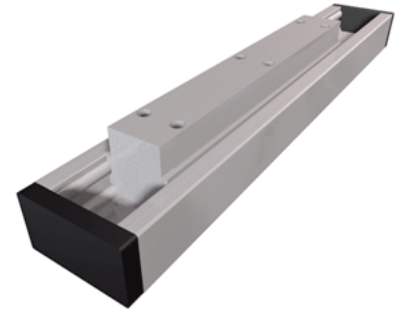


## UL 60 Compact Carriage

Call 800-321-7800 or visit us online at [www.nookindustries.com](http://www.nookindustries.com) to configure and order your UL 60 Compact Carriage today!



| <b>Details</b>  |        |
|---|--------|
| Size  | 60     |
| <b>Dimensions</b>   |        |
| A [mm]  | 29     |
| B [mm]  | 20     |
| C [mm]  | 43     |
| E [mm]  | 60     |
| H [mm]  | 30     |
| Basic Length L [mm]                                       | 215    |
| OO  | M6x10  |
| P [mm]  | 8      |
| Q [mm]  | 194    |
| R [mm]  | 180    |
| S [mm]  | 7.5    |
| T [mm]  | 11.0   |
| <b>Speed</b>  |        |
| Speed Maximum [m/s]                                       | 5      |
| <b>Forces and Torques</b>                                 |        |
| Fx dynamic [N]  | -      |
| Fy dynamic [N]  | 2000   |
| Fz dynamic [N]  | 1100   |
| Mx dynamic [N]  | 43     |
| My dynamic [N]  | 70     |
| Mz dynamic [N]  | 100    |
| Fx static [N]   | -      |
| Fy static [N]   | 3000   |
| Fz static [N]   | 1700   |
| Mx static [N]   | 67     |
| My static [N]   | 93     |
| Mz static [N]   | 120    |
| <b>Geometrical moments of inertia of aluminum profile</b> |        |
| Elastic modulus [N/mm <sup>2</sup> ]                      | 70000  |
| Ix [mm <sup>4</sup> ]                                     | 171000 |
| Iy [mm <sup>4</sup> ]                                     | 610000 |
| <b>Weight</b>   |        |
| Additional Weight per 100 mm [kg]                         | 0.20   |
| Basic Weight [kg]   | 2.1    |