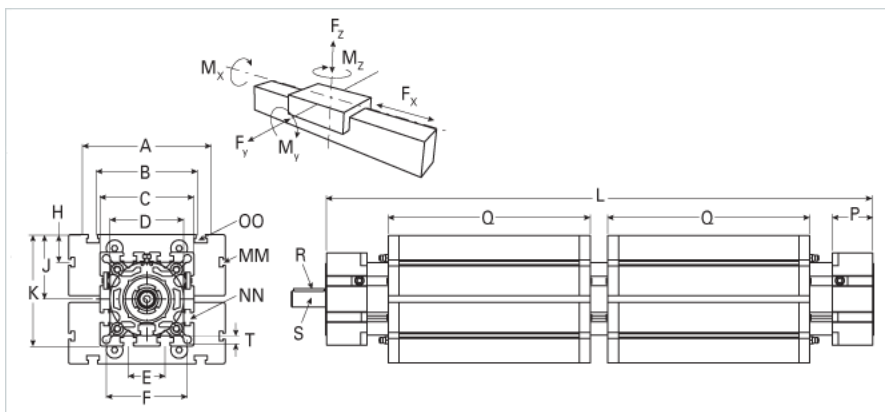
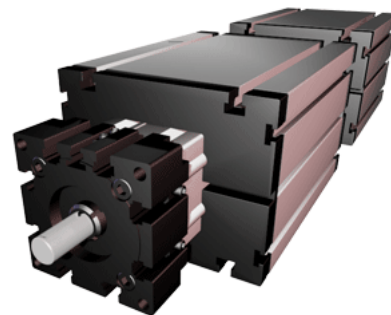


## ELK 100 WAC Dual Carriage

Call 800-321-7800 or visit us online at [www.nookindustries.com](http://www.nookindustries.com) to configure and order your ELK 100 WAC Dual Carriage today!



| <b>Details</b>  |                        |
|---|------------------------|
| Size  | 100                    |
| Screw Options   | 32x5/32x10/32x20/32x32 |
| Screw Type  | Ball Screw             |
| <b>Dimensions</b>   |                        |
| Basic Length L [mm]                                       | 752                    |
| A [mm]  | 230                    |
| B [mm]  | 155                    |
| C [mm]  | 130                    |
| D [mm]  | 110x1                  |
| E [mm]  | 50                     |
| F [mm]  | 112                    |
| G [mm]  | -                      |
| H [mm]  | 29                     |
| J [mm]  | 89                     |
| K [mm]  | 154                    |
| MM  | M10                    |
| NN  | M10                    |
| OO  | M10                    |
| P [mm]  | 55                     |
| Q [mm]  | 316                    |
| R [mm]  | 6x6x40                 |
| S Diameter x Length [mm]                                  | 22 x 45                |
| T-Diameter [mm]   | 10.5                   |
| <b>Forces and Torques</b>                                 |                        |
| No-load torque [Nm]                                       | 1.1                    |
| Fx dynamic [N]  | 8000                   |
| Fy dynamic [N]  | 6500                   |
| Fz dynamic [N]  | 2200                   |
| Mx dynamic [Nm]   | 230                    |
| My dynamic [Nm]   | 270                    |
| Mz dynamic [Nm]   | 500                    |
| Fx static [N]   | 10000                  |
| Fy static [N]   | 8000                   |
| Fz static [N]   | 3600                   |
| Mx static [Nm]  | 300                    |
| My static [Nm]  | 400                    |
| Mz static [Nm]  | 750                    |
| <b>Geometrical moments of inertia of aluminum profile</b> |                        |
| Elastic modulus [N/mm <sup>2</sup> ]                      | 70000                  |
| Ix [mm <sup>4</sup> ]                                     | 4440000                |
| Iy [mm <sup>4</sup> ]                                     | 4480000                |
| <b>Weight</b>   |                        |
| Additional Weight per 100 mm [kg]                         | 2.00                   |
| Basic Weight [kg]   | 32.0                   |