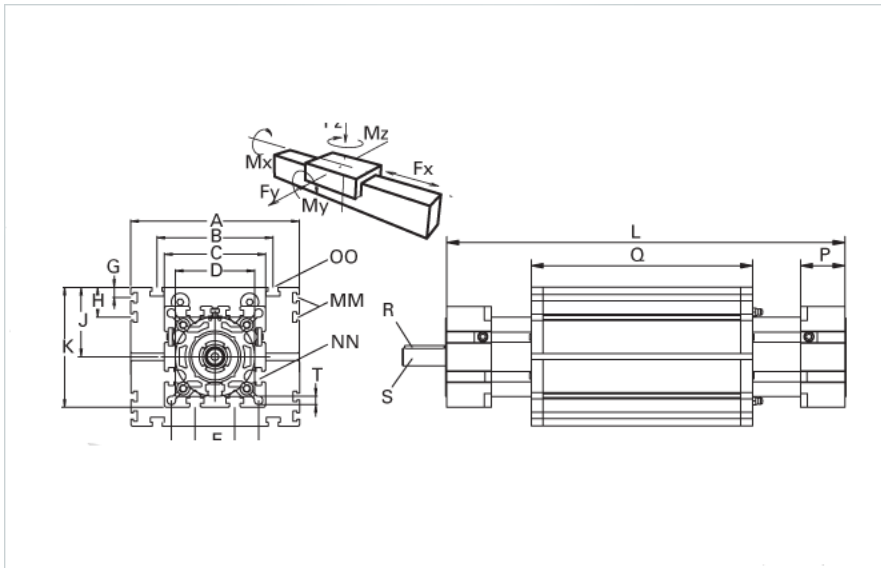
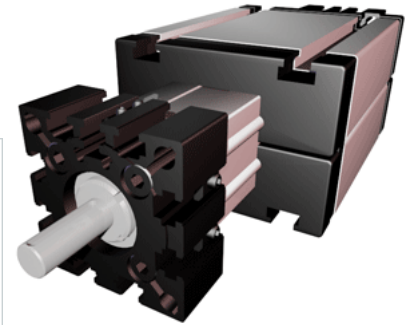


ELK 40 WAC

Call 800-321-7800 or visit us online at www.nookindustries.com to configure and order your ELK 40 WAC today!



Details	
Size	40
Screw Options	16x5/16x10/16x16
Screw Type	Ball Screw
Dimensions	
Basic Length L [mm]	191
A [mm]	100
B [mm]	66
C [mm]	58
D [mm]	48x1
E [mm]	18
F [mm]	47
G [mm]	-
H [mm]	-
J [mm]	35
K [mm]	64
MM	-
NN	M6
OO	M6
P [mm]	25
Q [mm]	138
R [mm]	3x3x25
S Diameter x Length [mm]	10x27
T-Diameter [mm]	6.5
Forces and Torques	
F_x dynamic [N]	1200
F_y dynamic [N]	700
F_z dynamic [N]	650
M_x dynamic [Nm]	20
M_y dynamic [Nm]	18
M_z dynamic [Nm]	25
F_x static [N]	1500
F_y static [N]	1200
F_z static [N]	900
M_x static [Nm]	25
M_y static [Nm]	32
M_z static [Nm]	35
Geometrical moments of inertia of aluminum profile	
Elastic modulus [N/mm ²]	70000
I_x [mm ⁴]	132000
I_y [mm ⁴]	134000
Weight	
Additional Weight per 100 mm [kg]	0.37
Basic Weight [kg]	1.7