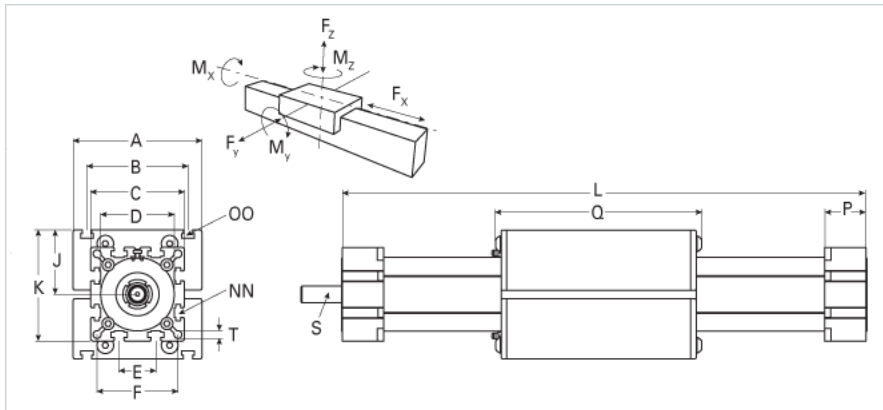
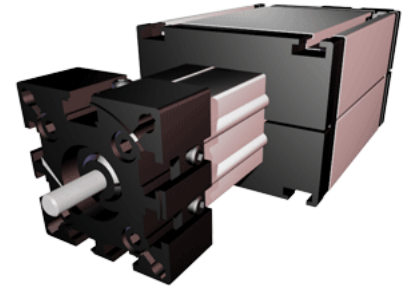


EGK 30 WAC

Call 800-321-7800 or visit us online at www.nookindustries.com to configure and order your EGK 30 WAC today!



| Details | |
|--|------------|
| Size | 30 |
| Screw Options | 8x2.5 |
| Screw Type | Ball Screw |
| Dimensions | |
| Basic Length L [mm] | 120 |
| A [mm] | 70 |
| B [mm] | 56 |
| C [mm] | 42 |
| D [mm] | 40x1 |
| E [mm] | 13 |
| F [mm] | 35 |
| H [mm] | - |
| J [mm] | 26 |
| K [mm] | 47 |
| MM [mm] | - |
| NN [mm] | M6 |
| OO [mm] | M6 |
| P [mm] | 18 |
| Q [mm] | 82 |
| R [mm] | 3x3x25 |
| S Diameter x Length [mm] | 5x16 |
| T-Diameter [mm] | 4.2 |
| Forces and Torques | |
| No Load Torque [Nm] | 0.25 |
| Fx dynamic [N] | 600 |
| Fy dynamic [N] | 60 |
| Fz dynamic [N] | 60 |
| Mx dynamic [Nm] | 5 |
| My dynamic [Nm] | 6 |
| Mz dynamic [Nm] | 7 |
| Fx static [N] | 750 |
| Fy static [N] | 90 |
| Fz static [N] | 90 |
| Mx static [Nm] | 10 |
| My static [Nm] | 13 |
| Mz static [Nm] | 14 |
| Geometrical moments of inertia of aluminum profile | |
| Elastic modulus [N/mm ²] | 70000 |
| Ix [mm ⁴] | 40900 |
| Iy [mm ⁴] | 40000 |
| Weight | |
| Additional Weight per 100 mm [kg] | 0.16 |
| Basic Weight [kg] | 0.6 |