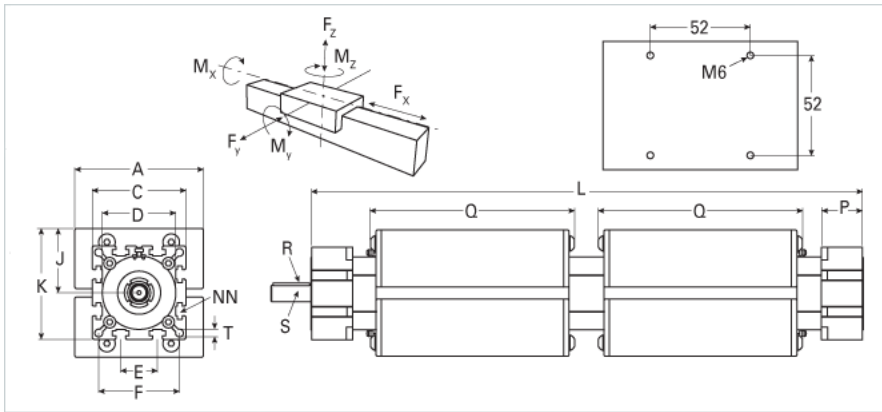
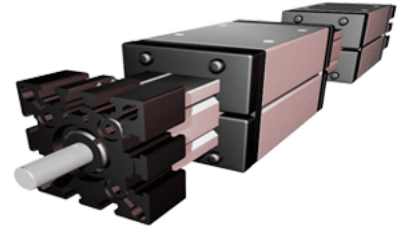


EGT 40 WAC Dual Carriage

Call 800-321-7800 or visit us online at www.nookindustries.com to configure and order your EGT 40 WAC Dual Carriage today!



| Details | |
|---|-------------|
| Size | 40 |
| Screw Options | 18x4/18x8 |
| Screw Type | Trapezoidal |
| Dimensions | |
| Basic Length L [mm] | 318 |
| A [mm] | 70 |
| B [mm] | - |
| C [mm] | 58 |
| D [mm] | 48x1 |
| E [mm] | 18 |
| F [mm] | 47 |
| H [mm] | - |
| J [mm] | 35 |
| K [mm] | 64 |
| MM [mm] | - |
| NN [mm] | M6 |
| OO [mm] | M6 |
| P [mm] | 25 |
| Q [mm] | 133 |
| R [mm] | 3x3x25 |
| S Diameter x Length [mm] | 10x27 |
| T-Diameter [mm] | 6.5 |
| Forces and Torques | |
| No Load Torque [Nm] | 0.7 |
| Fx dynamic [N] | 1200 |
| Fy dynamic [N] | 315 |
| Fz dynamic [N] | 450 |
| Mx dynamic [Nm] | 18 |
| My dynamic [Nm] | 40 |
| Mz dynamic [Nm] | 30 |
| Fx static [N] | 1500 |
| Fy static [N] | 350 |
| Fz static [N] | 500 |
| Mx static [Nm] | 20 |
| My static [Nm] | 44 |
| Mz static [Nm] | 33 |
| Geometrical moments of inertia of aluminum profile | |
| Elastic modulus [N/mm ²] | 70000 |
| Ix [mm ⁴] | 135000 |
| Iy [mm ⁴] | 148000 |
| Weight | |
| Additional Weight per 100 mm [kg] | 0.36 |
| Basic Weight [kg] | 1.3 |