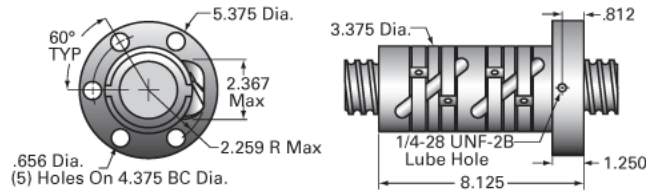
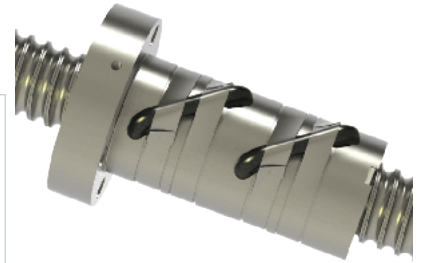


PowerTrac 2250 - 0500 XPR RA, with SSN Ball Nut, Preloaded,

Call 800-321-7800 or visit us online at www.nookindustries.com to configure and order your PowerTrac 2250 - 0500 XPR RA, with SSN Ball Nut,



Inch Ball Screw

Product Info

Screw Code	2250-0500 XPR RA
Precision	XPR
Screw Material	4150
Thread Direction	RH

Details

Ball Circle Diameter [in]	2.250
Lead [in]	0.500
Root Diameter [in]	1.850
End Code for Types 1,2,3,5 [* Journals may show tracings of the thread]	45
End Code for Type 4 [* Journals may show tracings of the thread]	28

Performance Specifications

Lead Accuracy +/- [in./ft.]	0.0010
-----------------------------	--------

Part Numbers

2 ft. Part Number	
4 ft. Part Number	
6 ft. Part Number	XPR22550R72
8 ft. Part Number	
12 ft. Part Number	XPR22550R144
16 ft. Part Number	
20 ft. Part Number	

Weight

Screw Weight [lb./ft.]	10.80
------------------------	-------

Inch Ball Nut, for SGT and XPR, Ground Accuracy, Preloaded, Fixed, SSN

Product Info

Ball Nut Number	SSN0402
Thread Direction	RH

Details

Ball Circle Diameter [in]	2.250
Lead [in]	0.500
Nominal Ball Diameter [in]	0.375
Root diameter [in]	1.850

Forces and Torques

Torque to Raise 1 lb. [in-lb]	0.088
-------------------------------	-------

Flange Part Numbers

Flange Part Number	INTEGRAL
--------------------	----------

Wiper Part Numbers

Wiper Kit Part Number	ELASTOMER
-----------------------	-----------

Weight

Nut Weight [lb]	15.20
-----------------	-------

Performance Specifications

Maximum Adjustable Preload [lb]	
Spring Rate x 10 ⁶ [lb./in.]	7.25
Dynamic Load [lb]	20106
Static Load [lb]	105325