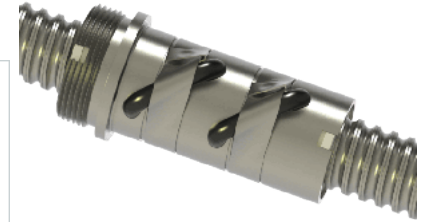
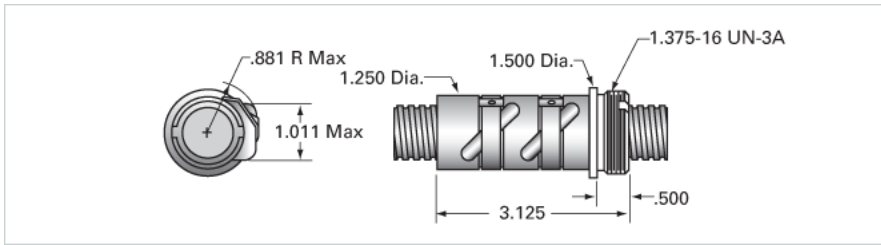


## PowerTrac 0875 - 0200 XPR RA, with PRN Ball Nut, Preloaded

Call 800-321-7800 or visit us online at [www.nookindustries.com](http://www.nookindustries.com) to configure and order your PowerTrac 0875 - 0200 XPR RA, with PRN Ball Nut,



### Inch Ball Screw

#### Product Info

Screw Code	0875-0200 XPR RA
Precision	XPR
Screw Material	4150
Thread Direction	RH

#### Details

Ball Circle Diameter [in]	0.875
Lead [in]	0.200
Root Diameter [in]	0.735
End Code for Types 1,2,3,5 [* Journals may show tracings of the thread]	17
End Code for Type 4 [* Journals may show tracings of the thread]	10

#### Performance Specifications

Lead Accuracy +/- [in./ft.]	0.0010
-----------------------------	--------

#### Part Numbers

2 ft. Part Number	
4 ft. Part Number	XPR8720R48
6 ft. Part Number	
8 ft. Part Number	XPR8720R96
12 ft. Part Number	
16 ft. Part Number	
20 ft. Part Number	

#### Weight

Screw Weight [lb./ft.]	1.80
------------------------	------

### Inch Ball Nut, for SGT and XPR, Ground Accuracy, Preloaded, Fixed, PRN

#### Product Info

Ball Nut Number	PRN10110
Thread Direction	RH

#### Details

Ball Circle Diameter [in]	0.875
Lead [in]	0.200
Nominal Ball Diameter [in]	0.125
Root diameter [in]	0.735

#### Forces and Torques

Torque to Raise 1 lb. [in-lb]	0.035
-------------------------------	-------

#### Flange Part Numbers

Flange Part Number	FLG8281
--------------------	---------

#### Wiper Part Numbers

Wiper Kit Part Number	ELASTOMER
-----------------------	-----------

#### Weight

Nut Weight [lb]	1.10
-----------------	------

#### Performance Specifications

Maximum Adjustable Preload [lb]	
Spring Rate x 10 <sup>6</sup> [lb./in.]	3.10
Dynamic Load [lb]	1375
Static Load [lb]	10780