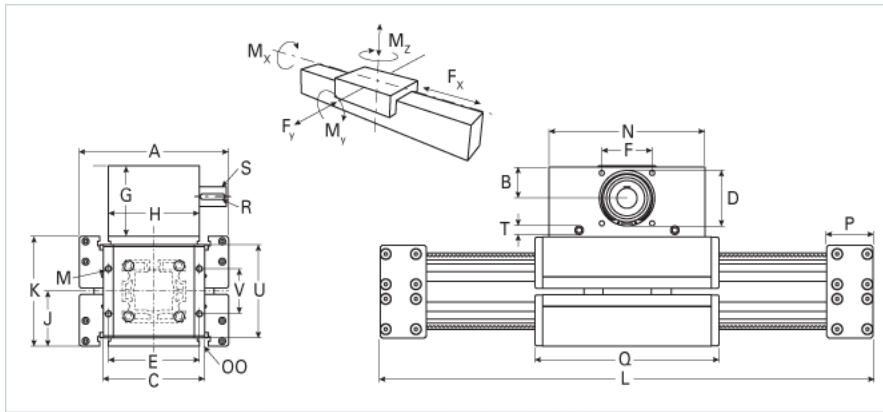
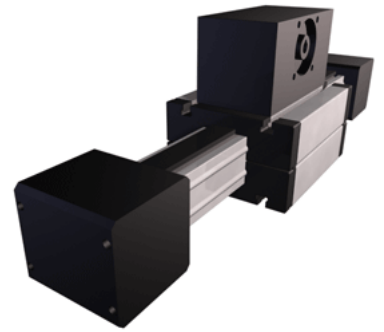


ELFZ 60S

Call 800-321-7800 or visit us online at www.nookindustries.com to configure and order your ELFZ 60S today!



Details

| | |
|---------------------|------|
| Size | 60S |
| Belt | 8M30 |
| mm/Rev | 96 |
| Number of Teeth | 24 |
| Pully Diameter [mm] | 61.1 |

Dimensions

| | |
|--------------------------------|---------|
| Basic Length L [mm] | 410 |
| A [mm] | 170 |
| B [mm] | 38 |
| C [mm] | 108 |
| D [mm] | 68 |
| E [mm] | 97 |
| F [mm] | 60 |
| G [mm] | 102 |
| H [mm] | 100 |
| I [mm] | |
| J [mm] | 53 |
| K [mm] | 106 |
| M | M8 |
| MM | |
| N [mm] | 180 |
| OO [mm] | M8 |
| P [mm] | 97 |
| Q [mm] | 214 |
| R [mm] | 6x6x40 |
| S [mm] | 18x45 |
| T | M8 |
| V [mm] | 60 |
| Shaft Diameter and Length [mm] | 18 x 45 |
| Key | 6x6x40 |

Speed

| | |
|---------------------|---|
| Speed Maximum [m/s] | 4 |
|---------------------|---|

Forces and Torques

| | |
|---------------------------|------|
| Drive Torque Maximum [Nm] | 48 |
| No-load torque [Nm] | 1.3 |
| Mz dynamic [Nm] | 340 |
| Mz static [Nm] | 460 |
| Fx dynamic [N] | 3200 |
| Fy dynamic [N] | 6200 |
| Fz dynamic [N] | 3200 |
| Mx dynamic [Nm] | 130 |
| My dynamic [Nm] | 280 |
| Fx static [N] | 3600 |
| Fy static [N] | 6200 |
| Fz static [N] | 3200 |
| Mx static [Nm] | 176 |
| My static [Nm] | 380 |

Geometrical moments of inertia of aluminum profile

| | |
|--------------------------------------|--------|
| Elastic modulus [N/mm ²] | 70000 |
| Ix [mm ⁴] | 679000 |
| Iy [mm ⁴] | 697000 |

Weight

Additional Weight per 100 mm [kg]

0.64

Basic Weight [kg]

23.1
