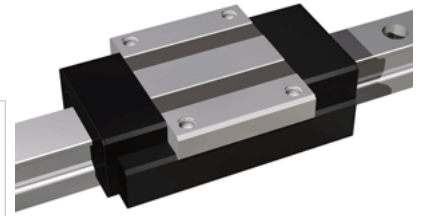
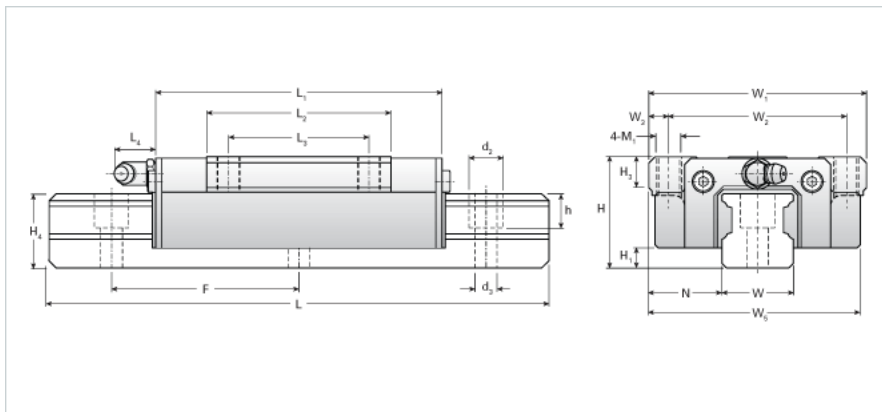


NH45TA Assembly

Call 800-321-7800 or visit us online at www.nookindustries.com to configure and order your NH45TA Assembly today!



| | |
|--|----------|
| Dimensions | |
| H [mm] | 60 |
| H1 [mm] | 11 |
| N [mm] | 37.5 |
| Metric Profile Rail | |
| Details | |
| Size [mm] | 45 |
| Type | Standard |
| Dimensions | |
| d2 [mm] | 20 |
| d3 [mm] | 14 |
| h [mm] | 21 |
| H4 [mm] | 42 |
| F [mm] | 105 |
| W [mm] | 45 |
| Maximum Length [mm] | 3000 |
| Weight | |
| Weights-Rail [kg/m] | 12.9 |
| Metric Runner Block, Heavy Load, High Speed, 4 Tapped Holes On Flange | |
| Details | |
| Size [mm] | 45 |
| Dimensions | |
| L1 [mm] | 158 |
| L2 [mm] | 102 |
| L3 [mm] | 80 |
| L4 [mm] | 14 |
| M1 x l | M12X19 |
| H3 [mm] | 15 |
| W1 [mm] | 120 |
| W2 [mm] | 100 |
| W3 [mm] | 9 |
| W5 [mm] | 112 |
| Forces and Torques | |
| Basic Load Ratings C [kN] | 60.20 |
| Basic Load Ratings C [lbf] | 13532 |
| Basic Load Ratings C0 [kN] | 95.71 |
| Basic Load Ratings C0 [lbf] | 21510 |
| Static Moment Ratings-Ma [kN-m] | 1.30 |
| Static Moment Ratings-Ma [lb-in] | 11544 |
| Static Moment Ratings-Mb [kN-m] | 1.30 |
| Static Moment Ratings-Mb [lb-in] | 11544 |
| Static Moment Ratings-Mc [kN-m] | 2.30 |
| Static Moment Ratings-Mc [lb-in] | 20398 |
| Weight | |
| Weight-Block [kg] | 2.7 |
| Grease Fitting | |
| Grease Fitting Part Number | B-PT 1/8 |