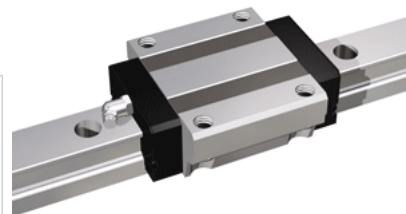
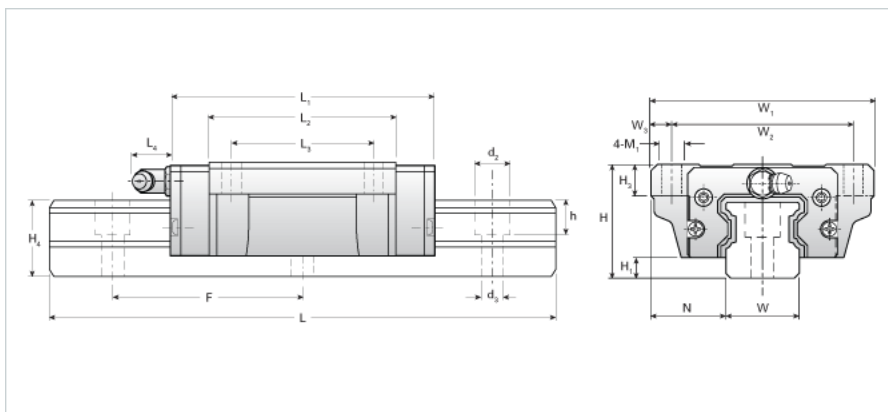


## NH20EA Assembly

Call 800-321-7800 or visit us online at [www.nookindustries.com](http://www.nookindustries.com) to configure and order your NH20EA Assembly today!



### Dimensions

|         |      |
|---------|------|
| H [mm]  | 30   |
| H1 [mm] | 5    |
| N [mm]  | 21.0 |

### Metric Profile Rail (Rail)Details

|           |          |
|-----------|----------|
| Size [mm] | 20       |
| Type      | Standard |

### (Rail)Dimensions

|                     |      |
|---------------------|------|
| d2 [mm]             | 9.5  |
| d3 [mm]             | 6    |
| h [mm]              | 11   |
| H4 [mm]             | 21   |
| F [mm]              | 60   |
| W [mm]              | 20   |
| Maximum Length [mm] | 3000 |

### (Rail)Weight

|                     |     |
|---------------------|-----|
| Weights-Rail [kg/m] | 2.5 |
|---------------------|-----|

### Metric Runner Block, Heavy Load, Flange Type, 4 Tapped Holes (Runner Block)Details

|           |    |
|-----------|----|
| Size [mm] | 20 |
|-----------|----|

### (Runner Block)Dimensions

|         |    |
|---------|----|
| L1 [mm] | 73 |
| L2 [mm] | 50 |
| L3 [mm] | 40 |
| L4 [mm] | 0  |
| H3 [mm] | 8  |
| W1 [mm] | 63 |
| W2 [mm] | 53 |
| W3 [mm] | 5  |
| M1      | M6 |

### (Runner Block)Forces and Torques

|                                  |       |
|----------------------------------|-------|
| Basic Load Ratings C [kN]        | 13.92 |
| Basic Load Ratings C [lbf]       | 3130  |
| Basic Load Ratings C0 [kN]       | 23.83 |
| Basic Load Ratings C0 [lbf]      | 5157  |
| Static Moment Ratings-Ma [kN-m]  | 0.16  |
| Static Moment Ratings-Ma [lb-in] | 1389  |
| Static Moment Ratings-Mb [kN-m]  | 0.16  |
| Static Moment Ratings-Mb [lb-in] | 1389  |
| Static Moment Ratings-Mc [kN-m]  | 0.26  |
| Static Moment Ratings-Mc [lb-in] | 2344  |

### (Runner Block)Weight

|                   |      |
|-------------------|------|
| Weight-Block [kg] | 0.40 |
|-------------------|------|

### (Runner Block)Grease Fitting

|                            |           |
|----------------------------|-----------|
| Grease Fitting Part Number | NAS516-1A |
|----------------------------|-----------|