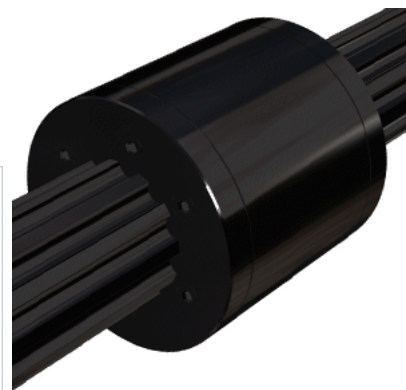
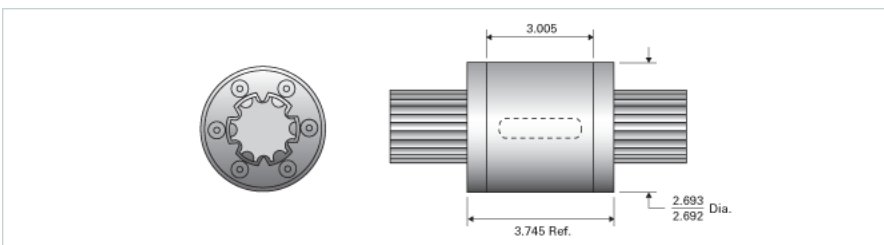


PowerTorq 1500-6-0250 HPR8945

Call 800-321-7800 or visit us online at www.nookindustries.com to configure and order your PowerTorq 1500-6-0250 HPR8945 today!



Inch Ball Spline Inner Race

Product Info

Nominal Diameter [in] 1.500

Details

Active Circuits 6

Root Diameter [in] 1.25

Part Numbers

12 ft. Part Number SRR6388

2 ft. Part Number

4 ft. Part Number SRR6372

6 ft. Part Number

8 ft. Part Number SRR6380

Weight

Inner Race Weight [lb./ft.] 5.25

Inch High Performance Ball Spline Outer Race

Product Info

Part Number HPR8945

Nominal Diameter [in] 1.500

Details

Active Circuits 6

Nominal Ball Diameter [in] 0.250

Optional Keyway 3/8x3/16x2.00

Ball Return Cast

Balls per Outer Race 168

Weight

Outer Race Weight [lb] 4.00

Performance Specifications

Dynamic Torque [in-lb] 8400

Static Torque [in-lb] 23170