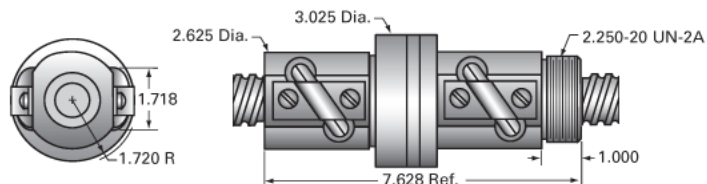


PowerTrac 1500 - 1000 SRT LA, with SEL Ball Nut, Adjustable

Call 800-321-7800 or visit us online at www.nookindustries.com to configure and order your PowerTrac 1500 - 1000 SRT LA, with SEL Ball Nut,



Inch Ball Screw

Product Info

Screw Code	1500-1000 SRT LA
Precision	SRT
Screw Material	4150
Thread Direction	LH

Details

Ball Circle Diameter [in]	1.500
Lead [in]	1.000
Root Diameter [in]	1.140
End Code for Types 1,2,3,5 [* Journals may show tracings of the thread]	25
End Code for Type 4 [* Journals may show tracings of the thread]	16

Performance Specifications

Lead Accuracy +/- [in./ft.]	0.0040
-----------------------------	--------

Part Numbers

2 ft. Part Number	
4 ft. Part Number	SRT1991
6 ft. Part Number	
8 ft. Part Number	SRT1992
12 ft. Part Number	SRT2203
16 ft. Part Number	SRT0437
20 ft. Part Number	SRT0615

Weight

Screw Weight [lb./ft.]	4.47
------------------------	------

Inch Ball Nut, for SRT, Standard Accuracy, Preloaded, Adjustable, SEL

Product Info

Ball Nut Number	SEL0697
Thread Direction	LH

Details

Ball Circle Diameter [in]	1.500
Lead [in]	1.000
Nominal Ball Diameter [in]	0.344
Root diameter [in]	1.140

Forces and Torques

Torque to Raise 1 lb. [in-lb]	0.177
-------------------------------	-------

Flange Part Numbers

Flange Part Number	FLG7777
--------------------	---------

Wiper Part Numbers

Wiper Kit Part Number	WKB2657
-----------------------	---------

Weight

Nut Weight [lb]	9.10
-----------------	------

Performance Specifications

Lead Accuracy +/- [in./ft.]	0.004
Maximum Adjustable Preload [lb]	1650
Spring Rate x 10 ⁶ [lb./in.]	
Dynamic Load [lb]	7560
Static Load [lb]	34662