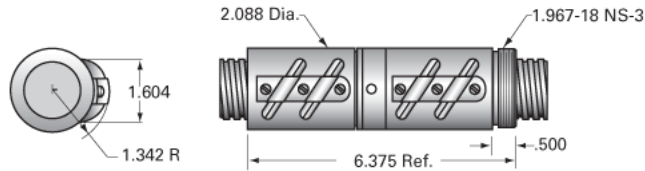


PowerTrac 1500 - 0250 SRT RA, with SEL Ball Nut, Adjustable

Call 800-321-7800 or visit us online at www.nookindustries.com to configure and order your PowerTrac 1500 - 0250 SRT RA, with SEL Ball Nut,



Inch Ball Screw

Product Info

Screw Code	1500-0250 SRT RA
Precision	SRT
Screw Material	4150
Thread Direction	RH

Details

Ball Circle Diameter [in]	1.500
Lead [in]	0.250
Root Diameter [in]	1.320
End Code for Types 1,2,3,5 [* Journals may show tracings of the thread]	30
End Code for Type 4 [* Journals may show tracings of the thread]	19

Performance Specifications

Lead Accuracy +/- [in./ft.]	0.0040
-----------------------------	--------

Part Numbers

2 ft. Part Number	
4 ft. Part Number	SRT7012
6 ft. Part Number	
8 ft. Part Number	SRT7020
12 ft. Part Number	SRT7028
16 ft. Part Number	SRT0433
20 ft. Part Number	SRT0595

Weight

Screw Weight [lb./ft.]	5.16
------------------------	------

Inch Ball Nut, for SRT, Standard Accuracy, Preloaded, Adjustable, SEL

Product Info

Ball Nut Number	SEL4271
Thread Direction	RH

Details

Ball Circle Diameter [in]	1.500
Lead [in]	0.250
Nominal Ball Diameter [in]	0.156
Root diameter [in]	1.320

Forces and Torques

Torque to Raise 1 lb. [in-lb]	0.044
-------------------------------	-------

Flange Part Numbers

Flange Part Number	FLG6754
--------------------	---------

Wiper Part Numbers

Wiper Kit Part Number	WKB2654
-----------------------	---------

Weight

Nut Weight [lb]	3.00
-----------------	------

Performance Specifications

Lead Accuracy +/- [in./ft.]	0.004
Maximum Adjustable Preload [lb]	920
Spring Rate x 10 ⁶ [lb./in.]	
Dynamic Load [lb]	4198
Static Load [lb]	44030