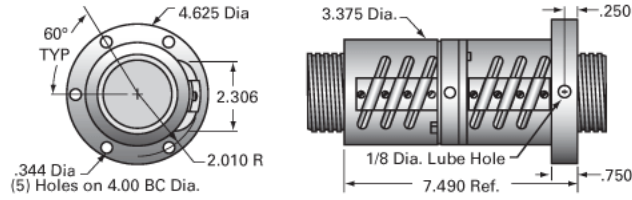


## PowerTrac 2500 - 0250 SRT RA, with SAR Ball Nut, Adjustable

Call 800-321-7800 or visit us online at [www.nookindustries.com](http://www.nookindustries.com) to configure and order your PowerTrac 2500 - 0250 SRT RA, with SAR Ball Nut,



### Inch Ball Screw

#### Product Info

Screw Code	2500-0250 SRT RA
Precision	SRT
Screw Material	4150
Thread Direction	RH

#### Details

Ball Circle Diameter [in]	2.500
Lead [in]	0.250
Root Diameter [in]	2.320
End Code for Types 1,2,3,5 [* Journals may show tracings of the thread]	50
End Code for Type 4 [* Journals may show tracings of the thread]	32

#### Performance Specifications

Lead Accuracy +/- [in./ft.]	0.0040
-----------------------------	--------

#### Part Numbers

2 ft. Part Number	
4 ft. Part Number	SRT3255
6 ft. Part Number	
8 ft. Part Number	SRT3256
12 ft. Part Number	SRT3257
16 ft. Part Number	SRT0442
20 ft. Part Number	SRT0606

#### Weight

Screw Weight [lb./ft.]	15.45
------------------------	-------

### Inch Ball Nut, for SRT, Standard Accuracy, Preloaded, Adjustable, SAR

#### Product Info

Ball Nut Number	SAR3242
Thread Direction	RH

#### Details

Ball Circle Diameter [in]	2.500
Lead [in]	0.250
Nominal Ball Diameter [in]	0.156
Root diameter [in]	2.320

#### Forces and Torques

Torque to Raise 1 lb. [in-lb]	0.044
-------------------------------	-------

#### Flange Part Numbers

Flange Part Number	INTEGRAL
--------------------	----------

#### Wiper Part Numbers

Wiper Kit Part Number	BRUSH
-----------------------	-------

#### Weight

Nut Weight [lb]	9.90
-----------------	------

#### Performance Specifications

Lead Accuracy +/- [in./ft.]	0.004
Maximum Adjustable Preload [lb]	1895
Spring Rate x 10 <sup>6</sup> [lb./in.]	
Dynamic Load [lb]	6315
Static Load [lb]	81938