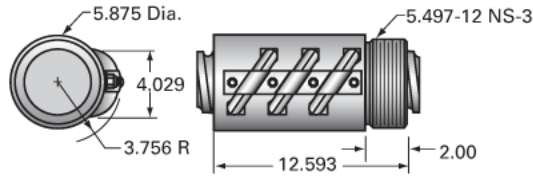


## PowerTrac 4000 - 1000 SRT RA, with SBN Ball Nut, Triple Circuit

Call 800-321-7800 or visit us online at [www.nookindustries.com](http://www.nookindustries.com) to configure and order your PowerTrac 4000 - 1000 SRT RA, with SBN Ball Nut, Triple



### Inch Ball Screw

#### Product Info

Screw Code	4000-1000 SRT RA
Precision	SRT
Screw Material	4150
Thread Direction	RH

#### Details

Ball Circle Diameter [in]	4.000
Lead [in]	1.000
Root Diameter [in]	3.338
End Code for Types 1,2,3,5 [* Journals may show tracings of the thread]	80
End Code for Type 4 [* Journals may show tracings of the thread]	48

#### Performance Specifications

Lead Accuracy +/- [in./ft.]	0.0080
-----------------------------	--------

#### Part Numbers

2 ft. Part Number	
4 ft. Part Number	SRT3259
6 ft. Part Number	
8 ft. Part Number	SRT3260
12 ft. Part Number	SRT3261
16 ft. Part Number	SRT0624
20 ft. Part Number	SRT3262

#### Weight

Screw Weight [lb./ft.]	34.40
------------------------	-------

### Inch Ball Nut, for SRT, Standard Accuracy, No Preload, SBN, Standard

#### Product Info

Ball Nut Number	SBN3258
Thread Direction	RH

#### Details

Ball Circle Diameter [in]	4.000
Lead [in]	1.000
Nominal Ball Diameter [in]	0.625
Root diameter [in]	3.338

#### Dimensions

A [in]

#### Forces and Torques

Torque to Raise 1 lb. [in-lb]	0.177
-------------------------------	-------

#### Flange Part Numbers

Flange Part Number	FLG3307
--------------------	---------

#### Wiper Part Numbers

Wiper Kit Part Number	WKB3306
Wiper Kit Felt Part Number	WKF4057

#### Weight

Nut Weight [lb]	53.50
-----------------	-------

#### Performance Specifications

Lead Accuracy +/- [in./ft.]	0.008
Maximum Adjustable Preload [lb]	
Spring Rate x 10 <sup>6</sup> [lb./in.]	
Dynamic Load [lb]	85758
Static Load [lb]	476970