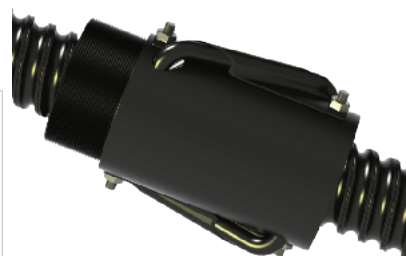
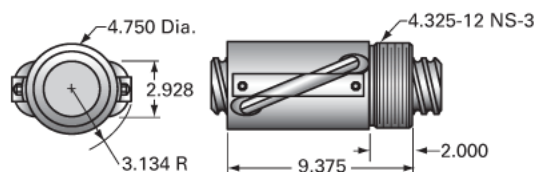


PowerTrac 3000 - 1500 SRT RA, with SBN Ball Nut, Double Circuit

Call 800-321-7800 or visit us online at www.nookindustries.com to configure and order your PowerTrac 3000 - 1500 SRT RA, with SBN Ball Nut, Double



Inch Ball Screw

(Screw)Product Info

Screw Code	3000-1500 SRT RA
Precision	SRT
Screw Material	4150
Thread Direction	RH

(Screw)Details

Ball Circle Diameter [in]	3.000
Lead [in]	1.500
Root Diameter [in]	2.480
End Code for Types 1,2,3,5 [* Journals may show tracings of the thread]	60
End Code for Type 4 [* Journals may show tracings of the thread]	39

(Screw)Performance Specifications

Lead Accuracy +/- [in./ft.]	0.0080
-----------------------------	--------

(Screw)Part Numbers

2 ft. Part Number	
4 ft. Part Number	SRT4987
6 ft. Part Number	
8 ft. Part Number	SRT4988
12 ft. Part Number	SRT4989
16 ft. Part Number	SRT0444
20 ft. Part Number	SRT0609

(Screw)Weight

Screw Weight [lb./ft.]	19.30
------------------------	-------

Inch Ball Nut, for SRT, Standard Accuracy, No Preload, SBN, Standard

(Nut)Product Info

Ball Nut Number	SBN4986
Thread Direction	RH

(Nut)Details

Ball Circle Diameter [in]	3.000
Lead [in]	1.500
Nominal Ball Diameter [in]	0.500
Root diameter [in]	2.480

(Nut)Dimensions

A [in]

(Nut)Forces and Torques

Torque to Raise 1 lb. [in-lb]	0.266
-------------------------------	-------

(Nut)Flange Part Numbers

Flange Part Number	FLG7575
--------------------	---------

(Nut)Wiper Part Numbers

Wiper Kit Part Number	WKB2661
Wiper Kit Felt Part Number	WKF0458

(Nut)Weight

Nut Weight [lb]	27.20
-----------------	-------

(Nut)Performance Specifications

Lead Accuracy +/- [in./ft.]	0.008
Maximum Adjustable Preload [lb]	
Spring Rate x 10 ⁶ [lb./in.]	
Dynamic Load [lb]	53646
Static Load [lb]	253617