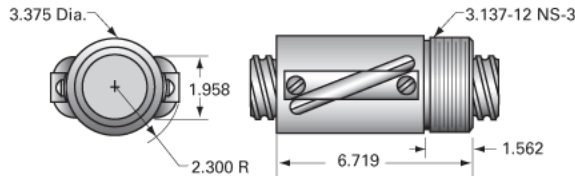


PowerTrac 2250 - 1000 SRT RA, with SBN Ball Nut, Double Circuit

Call 800-321-7800 or visit us online at www.nookindustries.com to configure and order your PowerTrac 2250 - 1000 SRT RA, with SBN Ball Nut, Double



Inch Ball Screw

Product Info

Screw Code	2250-1000 SRT RA
Precision	SRT
Screw Material	4150
Thread Direction	RH

Details

Ball Circle Diameter [in]	2.250
Lead [in]	1.000
Root Diameter [in]	1.850
End Code for Types 1,2,3,5 [* Journals may show tracings of the thread]	45
End Code for Type 4 [* Journals may show tracings of the thread]	28

Performance Specifications

Lead Accuracy +/- [in./ft.]	0.0040
-----------------------------	--------

Part Numbers

2 ft. Part Number	
4 ft. Part Number	SRT4556
6 ft. Part Number	
8 ft. Part Number	SRT4557
12 ft. Part Number	SRT4558
16 ft. Part Number	SRT0441
20 ft. Part Number	SRT0604

Weight

Screw Weight [lb./ft.]	10.90
------------------------	-------

Inch Ball Nut, for SRT, Standard Accuracy, No Preload, SBN, Standard

Product Info

Ball Nut Number	SBN4555
Thread Direction	RH

Details

Ball Circle Diameter [in]	2.250
Lead [in]	1.000
Nominal Ball Diameter [in]	0.375
Root diameter [in]	1.850

Dimensions

A [in]	
--------	--

Forces and Torques

Torque to Raise 1 lb. [in-lb]	0.177
-------------------------------	-------

Flange Part Numbers

Flange Part Number	FLG7574
--------------------	---------

Wiper Part Numbers

Wiper Kit Part Number	WKB2659
Wiper Kit Felt Part Number	WKF0457

Weight

Nut Weight [lb]	9.00
-----------------	------

Performance Specifications

Lead Accuracy +/- [in./ft.]	0.004
Maximum Adjustable Preload [lb]	
Spring Rate x 10 ⁶ [lb./in.]	
Dynamic Load [lb]	26538
Static Load [lb]	412660