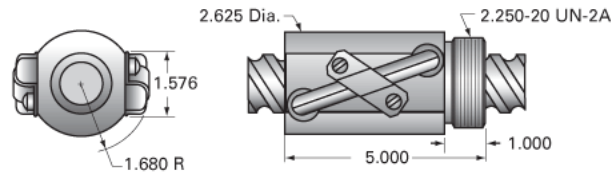


PowerTrac 1500 - 1875 SRT RA, with SBN Ball Nut, Double Circuit

Call 800-321-7800 or visit us online at www.nookindustries.com to configure and order your PowerTrac 1500 - 1875 SRT RA, with SBN Ball Nut, Double



Inch Ball Screw

Product Info

Screw Code	1500-1875 SRT RA
Precision	SRT
Screw Material	4150
Thread Direction	RH

Details

Ball Circle Diameter [in]	1.500
Lead [in]	1.875
Root Diameter [in]	1.188
End Code for Types 1,2,3,5 [* Journals may show tracings of the thread]	30
End Code for Type 4 [* Journals may show tracings of the thread]	19

Performance Specifications

Lead Accuracy +/- [in./ft.]	0.0040
-----------------------------	--------

Part Numbers

2 ft. Part Number	
4 ft. Part Number	SRT7702
6 ft. Part Number	
8 ft. Part Number	SRT7710
12 ft. Part Number	SRT7718
16 ft. Part Number	SRT0438
20 ft. Part Number	SRT0599

Weight

Screw Weight [lb./ft.]	5.25
------------------------	------

Inch Ball Nut, for SRT, Standard Accuracy, No Preload, SBN, Standard

Product Info

Ball Nut Number	SBN7654
Thread Direction	RH

Details

Ball Circle Diameter [in]	1.500
Lead [in]	1.875
Nominal Ball Diameter [in]	0.281
Root diameter [in]	1.188

Dimensions

A [in]

Forces and Torques

Torque to Raise 1 lb. [in-lb]	0.332
-------------------------------	-------

Flange Part Numbers

Flange Part Number	FLG7777
--------------------	---------

Wiper Part Numbers

Wiper Kit Part Number	WKB2657
Wiper Kit Felt Part Number	

Weight

Nut Weight [lb]	4.20
-----------------	------

Performance Specifications

Lead Accuracy +/- [in./ft.]	0.004
Maximum Adjustable Preload [lb]	
Spring Rate x 10 ⁶ [lb./in.]	
Dynamic Load [lb]	7242
Static Load [lb]	29895