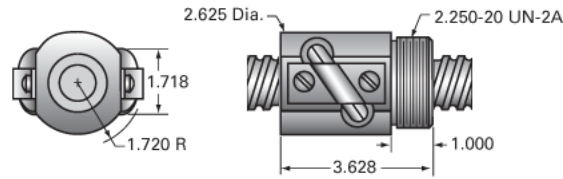


## PowerTrac 1500 - 1000 SRT LA, with SBN Ball Nut, Double Circuit

Call 800-321-7800 or visit us online at [www.nookindustries.com](http://www.nookindustries.com) to configure and order your PowerTrac 1500 - 1000 SRT LA, with SBN Ball Nut, Double



### Inch Ball Screw

#### Product Info

Screw Code	1500-1000 SRT LA
Precision	SRT
Screw Material	4150
Thread Direction	LH

#### Details

Ball Circle Diameter [in]	1.500
Lead [in]	1.000
Root Diameter [in]	1.140
End Code for Types 1,2,3,5 [* Journals may show tracings of the thread]	25
End Code for Type 4 [* Journals may show tracings of the thread]	16

#### Performance Specifications

Lead Accuracy +/- [in./ft.]	0.0040
-----------------------------	--------

#### Part Numbers

2 ft. Part Number	
4 ft. Part Number	SRT1991
6 ft. Part Number	
8 ft. Part Number	SRT1992
12 ft. Part Number	SRT2203
16 ft. Part Number	SRT0437
20 ft. Part Number	SRT0615

#### Weight

Screw Weight [lb./ft.]	4.47
------------------------	------

### Inch Ball Nut, for SRT, Standard Accuracy, No Preload, SBN, Standard

#### Product Info

Ball Nut Number	SBN1995
Thread Direction	LH

#### Details

Ball Circle Diameter [in]	1.500
Lead [in]	1.000
Nominal Ball Diameter [in]	0.344
Root diameter [in]	1.140

#### Dimensions

A [in]	
--------	--

#### Forces and Torques

Torque to Raise 1 lb. [in-lb]	0.177
-------------------------------	-------

#### Flange Part Numbers

Flange Part Number	FLG7777
--------------------	---------

#### Wiper Part Numbers

Wiper Kit Part Number	WKB2657
Wiper Kit Felt Part Number	

#### Weight

Nut Weight [lb]	3.90
-----------------	------

#### Performance Specifications

Lead Accuracy +/- [in./ft.]	0.004
Maximum Adjustable Preload [lb]	
Spring Rate x 10 <sup>6</sup> [lb./in.]	
Dynamic Load [lb]	7560
Static Load [lb]	34662