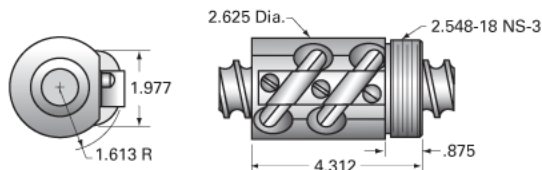


## PowerTrac 1500 - 0473 SRT RA, with SBN Ball Nut, Double Circuit

Call 800-321-7800 or visit us online at [www.nookindustries.com](http://www.nookindustries.com) to configure and order your PowerTrac 1500 - 0473 SRT RA, with SBN Ball Nut, Double



### Inch Ball Screw

#### (Screw)Product Info

Screw Code	1500-0473 SRT RA
Precision	SRT
Screw Material	4150
Thread Direction	RH

#### (Screw)Details

Ball Circle Diameter [in]	1.500
Lead [in]	0.473
Root Diameter [in]	1.140
End Code for Types 1,2,3,5 [* Journals may show tracings of the thread]	25
End Code for Type 4 [* Journals may show tracings of the thread]	16

#### (Screw)Performance Specifications

Lead Accuracy +/- [in./ft.]	0.0040
-----------------------------	--------

#### (Screw)Part Numbers

2 ft. Part Number	
4 ft. Part Number	SRT9610
6 ft. Part Number	
8 ft. Part Number	SRT9127
12 ft. Part Number	SRT9624
16 ft. Part Number	SRT0435
20 ft. Part Number	SRT0597

#### (Screw)Weight

Screw Weight [lb./ft.]	4.47
------------------------	------

### Inch Ball Nut, for SRT, Standard Accuracy, No Preload, SBN, Standard

#### (Nut)Product Info

Ball Nut Number	SBN7513
Thread Direction	RH

#### (Nut)Details

Ball Circle Diameter [in]	1.500
Lead [in]	0.473
Nominal Ball Diameter [in]	0.344
Root diameter [in]	1.140

#### (Nut)Dimensions

A [in]

#### (Nut)Forces and Torques

Torque to Raise 1 lb. [in-lb]	0.084
-------------------------------	-------

#### (Nut)Flange Part Numbers

Flange Part Number	FLG7573
--------------------	---------

#### (Nut)Wiper Part Numbers

Wiper Kit Part Number	WKB2655
Wiper Kit Felt Part Number	

#### (Nut)Weight

Nut Weight [lb]	3.90
-----------------	------

#### (Nut)Performance Specifications

Lead Accuracy +/- [in./ft.]	0.004
Maximum Adjustable Preload [lb]	
Spring Rate x 10<sup>6</sup> [lb./in.]	
Dynamic Load [lb]	10050
Static Load [lb]	57770