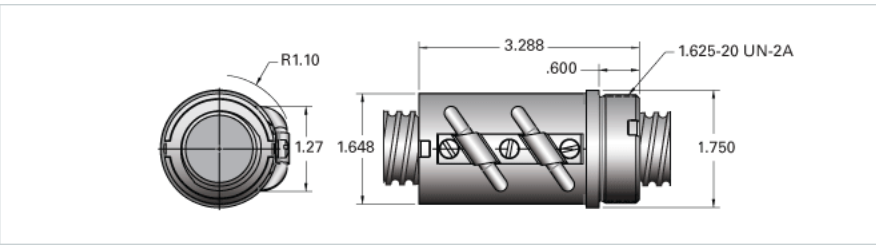


PowerTrac 1250 - 0200 SRT LA, with SBN Ball Nut, Double Circuit

Call 800-321-7800 or visit us online at www.nookindustries.com to configure and order your PowerTrac 1250 - 0200 SRT LA, with SBN Ball Nut, Double



| Inch Ball Screw | |
|---|------------------|
| Product Info | |
| Screw Code | 1250-0200 SRT LA |
| Precision | SRT |
| Screw Material | 4150 |
| Thread Direction | LH |
| Details | |
| Ball Circle Diameter [in] | 1.250 |
| Lead [in] | 0.200 |
| Root Diameter [in] | 1.115 |
| End Code for Types 1,2,3,5 [* Journals may show tracings of the thread] | 25 |
| End Code for Type 4 [* Journals may show tracings of the thread] | 16 |
| Performance Specifications | |
| Lead Accuracy +/- [in./ft.] | 0.0040 |
| Part Numbers | |
| 2 ft. Part Number | |
| 4 ft. Part Number | SRT1223 |
| 6 ft. Part Number | |
| 8 ft. Part Number | SRT1227 |
| 12 ft. Part Number | SRT1221 |
| 16 ft. Part Number | SRT1225 |
| 20 ft. Part Number | |
| Weight | |
| Screw Weight [lb./ft.] | 3.70 |
| Inch Ball Nut, for SRT, Standard Accuracy, No Preload, SBN, Standard | |
| Product Info | |
| Ball Nut Number | SBN10189 |
| Thread Direction | LH |
| Details | |
| Ball Circle Diameter [in] | 1.250 |
| Lead [in] | 0.200 |
| Nominal Ball Diameter [in] | 0.125 |
| Root diameter [in] | 1.115 |
| Dimensions | |
| A [in] | |
| Forces and Torques | |
| Torque to Raise 1 lb. [in-lb] | 0.035 |
| Flange Part Numbers | |
| Flange Part Number | FLG8283 |
| Wiper Part Numbers | |
| Wiper Kit Part Number | ELASTOMER |
| Wiper Kit Felt Part Number | |
| Weight | |
| Nut Weight [lb] | 1.80 |
| Performance Specifications | |
| Lead Accuracy +/- [in./ft.] | 0.004 |
| Maximum Adjustable Preload [lb] | |
| Spring Rate x 10 ⁶ [lb./in.] | |
| Dynamic Load [lb] | 3336 |
| Static Load [lb] | 34688 |