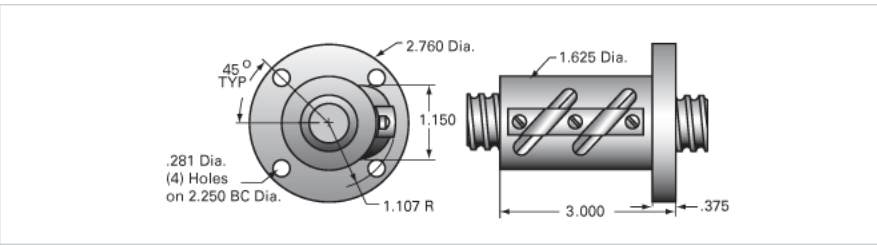


## PowerTrac 1000 - 0250 SRT RA, with SBN Ball Nut, Double Circuit,

Call 800-321-7800 or visit us online at [www.nookindustries.com](http://www.nookindustries.com) to configure and order your PowerTrac 1000 - 0250 SRT RA, with SBN Ball Nut, Double



Inch Ball Screw	
<b>Product Info</b>	
Screw Code	1000-0250 SRT RA
Precision	SRT
Screw Material	4150
Thread Direction	RH
<b>Details</b>	
Ball Circle Diameter [in]	1.000
Lead [in]	0.250
Root Diameter [in]	0.820
End Code for Types 1,2,3,5 [* Journals may show tracings of the thread]	20
End Code for Type 4 [* Journals may show tracings of the thread]	12
<b>Performance Specifications</b>	
Lead Accuracy +/- [in./ft.]	0.0040
<b>Part Numbers</b>	
2 ft. Part Number	
4 ft. Part Number	SRT5005
6 ft. Part Number	
8 ft. Part Number	SRT5013
12 ft. Part Number	SRT5021
16 ft. Part Number	SRT0426
20 ft. Part Number	
<b>Weight</b>	
Screw Weight [lb./ft.]	2.20
Inch Ball Nut, for SRT, Standard Accuracy, No Preload, SBN, Standard	
<b>Product Info</b>	
Ball Nut Number	SBN8278
Thread Direction	RH
<b>Details</b>	
Ball Circle Diameter [in]	1.000
Lead [in]	0.250
Nominal Ball Diameter [in]	0.156
Root diameter [in]	0.820
<b>Dimensions</b>	
A [in]	
<b>Forces and Torques</b>	
Torque to Raise 1 lb. [in-lb]	0.044
<b>Flange Part Numbers</b>	
Flange Part Number	INTEGRAL
<b>Wiper Part Numbers</b>	
Wiper Kit Part Number	WKB2651
Wiper Kit Felt Part Number	
<b>Weight</b>	
Nut Weight [lb]	1.50
<b>Performance Specifications</b>	
Lead Accuracy +/- [in./ft.]	0.004
Maximum Adjustable Preload [lb]	
Spring Rate x 10 <sup>6</sup> [lb./in.]	
Dynamic Load [lb]	3224
Static Load [lb]	27826