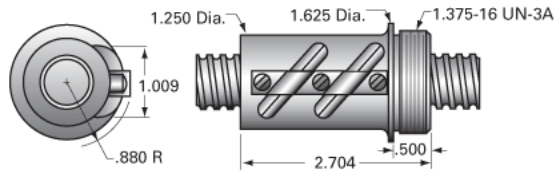


PowerTrac 0875 - 0200 SRT RA, with SBN Ball Nut, Double Circuit

Call 800-321-7800 or visit us online at www.nookindustries.com to configure and order your PowerTrac 0875 - 0200 SRT RA, with SBN Ball Nut, Double



Inch Ball Screw

Product Info

Screw Code	0875-0200 SRT RA
Precision	SRT
Screw Material	4150
Thread Direction	RH

Details

Ball Circle Diameter [in]	0.875
Lead [in]	0.200
Root Diameter [in]	0.735
End Code for Types 1,2,3,5 [* Journals may show tracings of the thread]	17
End Code for Type 4 [* Journals may show tracings of the thread]	10

Performance Specifications

Lead Accuracy +/- [in./ft.]	0.0040
-----------------------------	--------

Part Numbers

2 ft. Part Number	
4 ft. Part Number	SRT8541
6 ft. Part Number	
8 ft. Part Number	SRT8553
12 ft. Part Number	SRT8859
16 ft. Part Number	
20 ft. Part Number	

Weight

Screw Weight [lb./ft.]	1.78
------------------------	------

Inch Ball Nut, for SRT, Standard Accuracy, No Preload, SBN, Standard

Product Info

Ball Nut Number	SBN8277
Thread Direction	RH

Details

Ball Circle Diameter [in]	0.875
Lead [in]	0.200
Nominal Ball Diameter [in]	0.125
Root diameter [in]	0.735

Dimensions

A [in]	
--------	--

Forces and Torques

Torque to Raise 1 lb. [in-lb]	0.035
-------------------------------	-------

Flange Part Numbers

Flange Part Number	FLG8281
--------------------	---------

Wiper Part Numbers

Wiper Kit Part Number	WKB2648
Wiper Kit Felt Part Number	

Weight

Nut Weight [lb]	0.70
-----------------	------

Performance Specifications

Lead Accuracy +/- [in./ft.]	0.004
Maximum Adjustable Preload [lb]	
Spring Rate x 10 ⁶ [lb./in.]	
Dynamic Load [lb]	1942
Static Load [lb]	18063