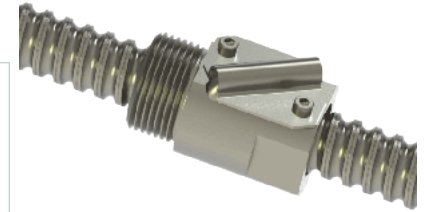
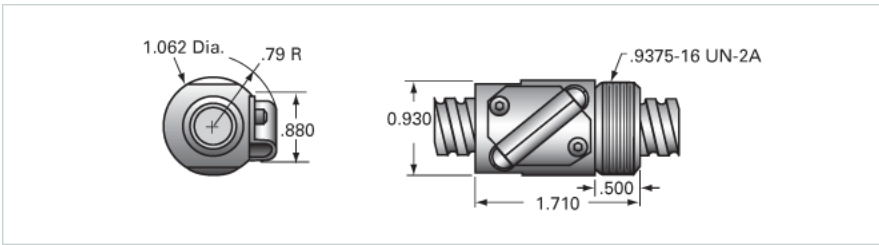


## PowerTrac 0631 - 0200 SRT RA, with SBN Ball Nut, Stainless Steel,

Call 800-321-7800 or visit us online at [www.nookindustries.com](http://www.nookindustries.com) to configure and order your PowerTrac 0631 - 0200 SRT RA, with SBN Ball Nut,



Inch Ball Screw	
<b>Product Info</b>	
Screw Code	0631-0200 SRT RS
Precision	SRT
Screw Material	17-4 PH Stainless
Thread Direction	RH
<b>Details</b>	
Ball Circle Diameter [in]	0.631
Lead [in]	0.200
Root Diameter [in]	0.500
End Code for Types 1,2,3,5 [* Journals may show tracings of the thread]	12
End Code for Type 4 [* Journals may show tracings of the thread]	8
<b>Performance Specifications</b>	
Lead Accuracy +/- [in./ft.]	0.0040
<b>Part Numbers</b>	
2 ft. Part Number	SRT5359
4 ft. Part Number	SRT5648
6 ft. Part Number	SRT5378
8 ft. Part Number	
12 ft. Part Number	
16 ft. Part Number	
20 ft. Part Number	
<b>Weight</b>	
Screw Weight [lb./ft.]	0.82
Inch Ball Nut, for SRT, Standard Accuracy, No Preload, SBN, Stainless Steel	
<b>Product Info</b>	
Ball Nut Number	SBN7645
Thread Direction	RH
<b>Details</b>	
Ball Circle Diameter [in]	0.631
Lead [in]	0.200
Nominal Ball Diameter [in]	0.125
Root diameter [in]	0.500
<b>Forces and Torques</b>	
Torque to Raise 1 lb. [in-lb]	0.035
<b>Flange Part Numbers</b>	
Flange Part Number	-
<b>Wiper Part Numbers</b>	
Wiper Kit Part Number	-
<b>Weight</b>	
Nut Weight [lb]	0.27
<b>Performance Specifications</b>	
Lead Accuracy +/- [in./ft.]	0.004
Maximum Adjustable Preload [lb]	
Spring Rate x 10 <sup>6</sup> [lb./in.]	
Dynamic Load [lb]	140
Static Load [lb]	1149