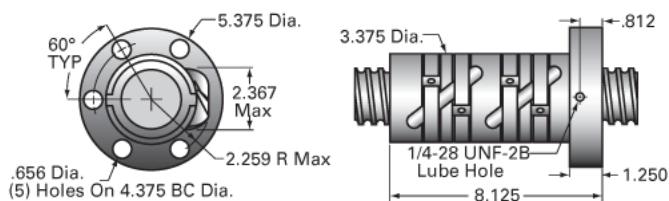
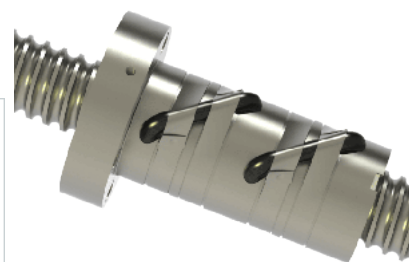


## PowerTrac 2250 - 0500 SGT RA, with SSN Ball Nut, Preloaded,

Call 800-321-7800 or visit us online at [www.nookindustries.com](http://www.nookindustries.com) to configure and order your PowerTrac 2250 - 0500 SGT RA, with SSN Ball Nut,



### Inch Ball Screw

#### Product Info

Screw Code	2250-0500 SGT RA
Precision	SGT
Screw Material	4150
Thread Direction	RH

#### Details

Ball Circle Diameter [in]	2.250
Lead [in]	0.500
Root Diameter [in]	1.850
End Code for Types 1,2,3,5 [* Journals may show tracings of the thread]	25
End Code for Type 4 [* Journals may show tracings of the thread]	28

#### Performance Specifications

Lead Accuracy +/- [in./ft.]	0.0005
-----------------------------	--------

#### Part Numbers

2 ft. Part Number	
4 ft. Part Number	
6 ft. Part Number	
8 ft. Part Number	
12 ft. Part Number	
16 ft. Part Number	
20 ft. Part Number	GT22550R72

#### Weight

Screw Weight [lb./ft.]	10.80
------------------------	-------

### Inch Ball Nut, for SGT and XPR, Ground Accuracy, Preloaded, Fixed, SSN

#### Product Info

Ball Nut Number	SSN0402
Thread Direction	RH

#### Details

Ball Circle Diameter [in]	2.250
Lead [in]	0.500
Nominal Ball Diameter [in]	0.375
Root diameter [in]	1.850

#### Forces and Torques

Torque to Raise 1 lb. [in-lb]	0.088
-------------------------------	-------

#### Flange Part Numbers

Flange Part Number	INTEGRAL
--------------------	----------

#### Wiper Part Numbers

Wiper Kit Part Number	ELASTOMER
-----------------------	-----------

#### Weight

Nut Weight [lb]	15.20
-----------------	-------

#### Performance Specifications

Maximum Adjustable Preload [lb]	
Spring Rate x 10 <sup>6</sup> [lb./in.]	7.25
Dynamic Load [lb]	20106
Static Load [lb]	105325