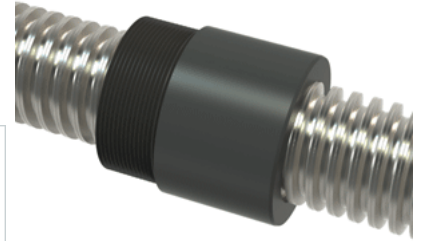


PowerAC Trapezoidal Assembly 905 RS w/Plastic Nut

Call 800-321-7800 or visit us online at www.nookindustries.com to configure and order your PowerAC Trapezoidal Assembly 905 RS w/Plastic Nut today!



Trapezoidal Lead Screw

Product Info

Screw Code	905 RS
Screw Material	300 Series Stainless
Thread Direction	RH

Details

Diameter	40
Lead	7
Starts	1
Pitch [mm]	7
Lead Accuracy +/- [*MU*m/25mm]	6.25
Thread Code	905
End Code for Types 1,2,3,5 [* Journals may show tracings of the thread]	30
End Code for Type 4 [* Journals may show tracings of the thread]	19

Dimensions

A - Root Diameter Mmmimum [mm]	30.95
D - Nominal Rod Diameter	40

Part Numbers

1800 mm Part Number	55905
3600 mm Part Number	56905
900 mm Part Number	54905

Weight

Weight Per Meter [kg]	8.16
-----------------------	------

Trapezoidal Lead Nut

Product Info

Part Number	30905
Thread Direction	RH
Type	Plastic

Details

Diameter	40
Lead [mm]	7
Starts	1
Pitch [mm]	7
Lash (Maximum Axial in) [mm]	0.32
Nominal Rod Diameter	40
Thread Code	905

Dimensions

B [mm]	60.0
C [mm]	60.0
E [mm]	20.00
F (n) Dia. [mm]	(4) 11.00
F BCD [mm]	90.00
G [mm]	21.0
H [mm]	120.0
J [mm]	M55.1.5

Forces and Torques

Torque to Raise 1 kN [Nm]	3.022
---------------------------	-------

Flange Part Numbers

Flange Part Number	72005
--------------------	-------

Weight

Flange Weight [kg]	1.40
Nut Weight [g]	160

Performance Specifications

Efficiency [%]	37
Lead Accuracy +/- [*MU*m/25mm]	6.25
Dynamic Load Capacity [N]	27580
Static Load Capacity [N]	27580