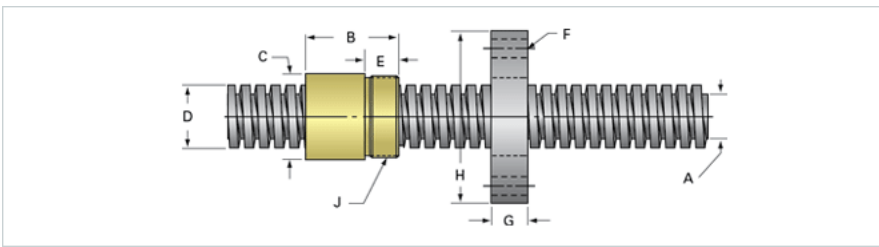
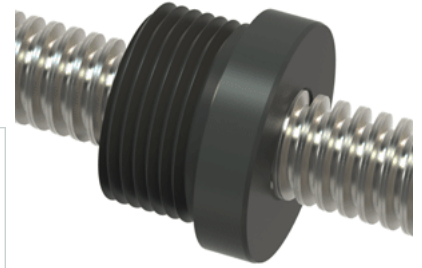


PowerAC Trapezoidal Assembly 902 RS w/Plastic Nut

Call 800-321-7800 or visit us online at www.nookindustries.com to configure and order your PowerAC Trapezoidal Assembly 902 RS w/Plastic Nut today!



Trapezoidal Lead Screw

Product Info

Screw Code	902 RS
Screw Material	300 Series Stainless
Thread Direction	RH

Details

Diameter	16
Lead	4
Starts	1
Pitch [mm]	4
Lead Accuracy +/- [*MU*m/25mm]	6.25
Thread Code	902
End Code for Types 1,2,3,5 [* Journals may show tracings of the thread]	10
End Code for Type 4 [* Journals may show tracings of the thread]	6

Dimensions

A - Root Diameter Mmmimum [mm]	10.90
D - Nominal Rod Diameter	16

Part Numbers

1800 mm Part Number	55902
3600 mm Part Number	56902
900 mm Part Number	54902

Weight

Weight Per Meter [kg]	1.21
-----------------------	------

Trapezoidal Lead Nut

Product Info

Part Number	30902
Thread Direction	RH
Type	Plastic

Details

Diameter	16
Lead [mm]	4
Starts	1
Pitch [mm]	4
Lash (Maximum Axial in) [mm]	0.24
Nominal Rod Diameter	16
Thread Code	902

Dimensions

B [mm]	26.0
C [mm]	28.0
E [mm]	13.00
F (n) Dia. [mm]	(4) 7.00
F BCD [mm]	23.00
G [mm]	14.0
H [mm]	66.0
J [mm]	M25x1.5

Forces and Torques

Torque to Raise 1 kN [Nm]	1.374
---------------------------	-------

Flange Part Numbers

Flange Part Number	72002
--------------------	-------

Weight

Flange Weight [kg]	0.31
Nut Weight [g]	18

Performance Specifications

Efficiency [%]	46
Lead Accuracy +/- [*MU*m/25mm]	6.25
Dynamic Load Capacity [N]	4412
Static Load Capacity [N]	4412