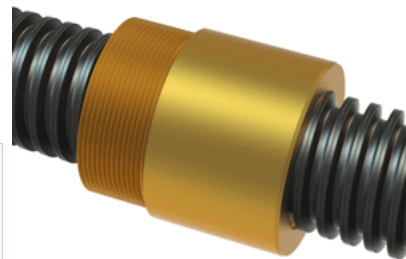


PowerAC Trapezoidal Assembly 905 RA w/Bronze Nut

Call 800-321-7800 or visit us online at www.nookindustries.com to configure and order your PowerAC Trapezoidal Assembly 905 RA w/Bronze Nut



Trapezoidal Lead Screw

(Screw)Product Info

Screw Code	905 RA
Screw Material	4140 Series
Thread Direction	RH

(Screw)Details

Diameter	40
Lead	7
Starts	1
Pitch [mm]	7
Lead Accuracy +/- [$\frac{956}{m/25mm}$]	6.25
Thread Code	905
End Code for Types 1,2,3,5 [* Journals may show tracings of the thread]	30
End Code for Type 4 [* Journals may show tracings of the thread]	19

(Screw)Dimensions

A - Root Diameter Mmmimum [mm]	30.95
D - Nominal Rod Diameter	40

(Screw)Part Numbers

1800 mm Part Number	15905
3600 mm Part Number	16905
900 mm Part Number	14905

(Screw)Weight

Weight Per Meter [kg]	8.16
-----------------------	------

Trapezoidal Lead Nut

(Nut)Product Info

Part Number	20905
Thread Direction	RH
Type	Bronze

(Nut)Details

Diameter	40
Lead [mm]	7
Starts	1
Pitch [mm]	7
Lash (Maximum Axial in) [mm]	0.32
Nominal Rod Diameter	40
Thread Code	905

(Nut)Dimensions

B [mm]	60.0
C [mm]	60.0
E [mm]	20.00
F (n) Dia. [mm]	(4) 11.00
F BCD [mm]	90.00
G [mm]	21.0
H [mm]	120.0
J [mm]	M55.15

(Nut)Forces and Torques

Torque to Raise 1 kN [Nm]	3.503
---------------------------	-------

(Nut)Flange Part Numbers

Flange Part Number	72005
--------------------	-------

(Nut)Weight

Flange Weight [kg]	1.40
Nut Weight [g]	900

(Nut)Performance Specifications

Efficiency [%]	32
Lead Accuracy +/- [$\frac{956}{m/25mm}$]	6.25
Dynamic Load Capacity [N]	55160
Static Load Capacity [N]	176512