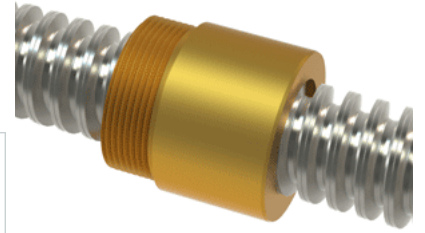


PowerAC Trapezoidal Assembly 904 RS w/Bronze Nut

Call 800-321-7800 or visit us online at www.nookindustries.com to configure and order your PowerAC Trapezoidal Assembly 904 RS w/Bronze Nut



Trapezoidal Lead Screw

Product Info

| | |
|------------------|----------------------|
| Screw Code | 904 RS |
| Screw Material | 300 Series Stainless |
| Thread Direction | RH |

Details

| | |
|---|------|
| Diameter | 26 |
| Lead | 6 |
| Starts | 1 |
| Pitch [mm] | 6 |
| Lead Accuracy +/- [*MU*m/25mm] | 6.25 |
| Thread Code | 904 |
| End Code for Types 1,2,3,5 [* Journals may show tracings of the thread] | 17 |
| End Code for Type 4 [* Journals may show tracings of the thread] | 10 |

Dimensions

| | |
|--------------------------------|-------|
| A - Root Diameter Mmmimum [mm] | 17.84 |
| D - Nominal Rod Diameter | 26 |

Part Numbers

| | |
|---------------------|-------|
| 1800 mm Part Number | 55904 |
| 3600 mm Part Number | 56904 |
| 900 mm Part Number | 54904 |

Weight

| | |
|-----------------------|-----|
| Weight Per Meter [kg] | 3.2 |
|-----------------------|-----|

Trapezoidal Lead Nut

Product Info

| | |
|------------------|--------|
| Part Number | 20904 |
| Thread Direction | RH |
| Type | Bronze |

Details

| | |
|------------------------------|------|
| Diameter | 26 |
| Lead [mm] | 6 |
| Starts | 1 |
| Pitch [mm] | 6 |
| Lash (Maximum Axial in) [mm] | 0.30 |
| Nominal Rod Diameter | 26 |
| Thread Code | 904 |

Dimensions

| | |
|-----------------|----------|
| B [mm] | 45.0 |
| C [mm] | 45.0 |
| E [mm] | 15.00 |
| F (n) Dia. [mm] | (4) 7.00 |
| F BCD [mm] | 70.00 |
| G [mm] | 16.0 |
| H [mm] | 85.0 |
| J [mm] | M40x15 |

Forces and Torques

| | |
|---------------------------|-------|
| Torque to Raise 1 kN [Nm] | 2.469 |
|---------------------------|-------|

Flange Part Numbers

| | |
|--------------------|-------|
| Flange Part Number | 72004 |
|--------------------|-------|

Weight

| | |
|--------------------|------|
| Flange Weight [kg] | 0.54 |
| Nut Weight [g] | 440 |

Performance Specifications

| | |
|--------------------------------|-------|
| Efficiency [%] | 39 |
| Lead Accuracy +/- [*MU*m/25mm] | 6.25 |
| Dynamic Load Capacity [N] | 23304 |
| Static Load Capacity [N] | 74573 |