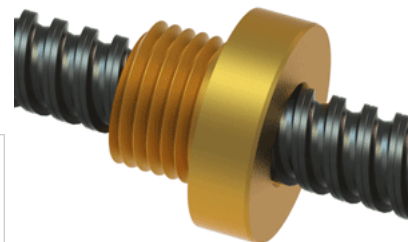


## PowerAC Trapezoidal Assembly 900 RA w/Bronze Nut

Call 800-321-7800 or visit us online at [www.nookindustries.com](http://www.nookindustries.com) to configure and order your PowerAC Trapezoidal Assembly 900 RA w/Bronze Nut



### Trapezoidal Lead Screw

#### Product Info

Screw Code	900 RA
Screw Material	4140 Series
Thread Direction	RH

#### Details

Diameter	10
Lead	3
Starts	2
Pitch [mm]	1.5
Lead Accuracy +/- [*MU*m/25mm]	6.25
Thread Code	900
End Code for Types 1,2,3,5 [* Journals may show tracings of the thread]	7
End Code for Type 4 [* Journals may show tracings of the thread]	4

#### Dimensions

A - Root Diameter Mmmimum [mm]	7.92
D - Nominal Rod Diameter	10

#### Part Numbers

1800 mm Part Number	15900
3600 mm Part Number	
900 mm Part Number	14900

#### Weight

Weight Per Meter [kg]	0.5
-----------------------	-----

### Trapezoidal Lead Nut

#### Product Info

Part Number	20900
Thread Direction	RH
Type	Bronze

#### Details

Diameter	10
Lead [mm]	3
Starts	2
Pitch [mm]	1.5
Lash (Maximum Axial in) [mm]	0.13
Nominal Rod Diameter	10
Thread Code	900

#### Dimensions

B [mm]	16.0
C [mm]	18.0
E [mm]	10.00
F (n) Dia. [mm]	(4) 7.00
F BCD [mm]	25.50
G [mm]	11.0
H [mm]	42.0
J [mm]	M15x1

#### Forces and Torques

Torque to Raise 1 kN [Nm]	1.090
---------------------------	-------

#### Flange Part Numbers

Flange Part Number	72001
--------------------	-------

#### Weight

Flange Weight [kg]	0.09
Nut Weight [g]	25

#### Performance Specifications

Efficiency [%]	44
Lead Accuracy +/- [*MU*m/25mm]	6.25
Dynamic Load Capacity [N]	3447
Static Load Capacity [N]	11032