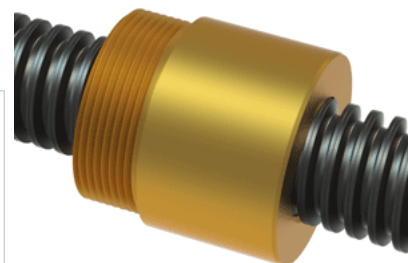


PowerAC 7/8"-6 RA w/Bronze Nut

Call 800-321-7800 or visit us online at www.nookindustries.com to configure and order your PowerAC 7/8"-6 RA w/Bronze Nut today!



Rolled Inch Acme Screw

Product Info

Screw Code	086-RA
Thread Direction	RH
Screw Material	4140 Series

Details

Lead [in]	0.166
Starts	1
Pitch [in]	0.166
Turns Per Inch	6
Threads per Inch	6
Thread Code	086
Form	2C
End Code for Types 1,2,3,5 [* Journals may show tracings of the thread]	15
End Code for Type 4 [* Journals may show tracings of the thread]	10

Dimensions

A - Root Diameter Minimum [in]	0.661
D - Nominal Rod Diameter [in]	0.875

Part Numbers

3 ft. Part Number	11086
6 ft. Part Number	12086
12 ft. Part Number	13086
20 ft. Part Number	

Performance Specifications

Lead Accuracy +/- [in/in]	0.0003
---------------------------	--------

Weight

Screw Weight [lb./ft.]	1.65
------------------------	------

Inch Acme Nut with Optional Flange

Product Info

Part Number	20086
Thread Direction	RH
Type	Bronze

Details

Lead [in]	0.166
Starts	1
Pitch [in]	0.166
Turns Per Inch	6
Lash (Maximum Axial) [in]	0.009
Nominal Rod Diameter [in]	0.875
Threads per Inch	6
Thread Code	086
Form	2C

Dimensions

B [in]	1.50
C [in]	1.50
E [in]	0.50
F (n) Dia. [in]	(4) .266
F BCD [in]	2.260
G [in]	0.52
H [in]	2.76
J [in]	1.375-16

Forces and Torques

Torque to Raise 1 lb. [in-lb]	0.083
-------------------------------	-------

Flange Part Numbers

Flange No-Lash Part Number	73275
Flange Part Number	FLG8281

Weight

Flange Weight [lb]	0.85
Nut Weight [lb]	0.57

Performance Specifications

Efficiency [%]	32
Lead Accuracy +/- [in/in]	0.0003
Dynamic Load Capacity [lb]	3828
Static Load Capacity [lb]	12250